

BRUSH BLAZER[®]

by



MODEL #: TBB-3002

COMMERCIAL WALK-BEHIND FIELD & BRUSH CUTTER



OPERATOR'S MANUAL

MANUAL PART#: Q0002

Rev.1 - Nov 2021

PECO BRUSH BLAZER

TABLE OF CONTENTS

SECTION	PAGE	SECTION	PAGE
Safety Alert Symbols	2	Deck And Drive Belt Removal And Replacement -	16-17
General Safety Rules	3	Track Removal/Replacement	18
Safety Decals	4	Blade Shaft Assembly	19
Peco Limited Warranty	5	Blade Replacement	19
Controls	6	Label Replacement Part Numbers	20
Operation	7-10	Regular Maintenance	21
Tips On Brush Cutting	10	Scheduled Replacement Parts List	22
Pump Adjustment	11	Hydraulic Oil Specifications	22
Pump Belt Adjustment	12	Exploded Views And Parts Lists	23-38
Drive Belt Idler Adjustment	13	Torque Specifications	39
Drive Belt Adjustment	14	California Emission Control Warranty Statement -	40-41
Deck Belt Adjustment	15		
Mower Deck Pulley Alignment	15		

Safety Alert Symbol



This Safety Alert Symbol means: **“ATTENTION! BECOME ALERT! YOUR SAFETY IS INVOLVED!”**

This symbol is used to call attention to safety precautions that should be followed by the operator to avoid accidents. When you see this symbol, carefully read the message that follows and heed its advice. Failure to comply with safety precautions could result in death or serious bodily injury.

Safety Signs

The signal words **DANGER**, **WARNING**, and **CAUTION** are used on the equipment safety signs. These words are intended to alert the viewer to the existence and the degree of hazard seriousness.



White letters on **RED**

This signal word indicates a potentially hazardous situation which, if not avoided, will result in death or serious injury.



Black letters on **ORANGE**

This signal word indicates a potentially hazardous situation which, if not avoided, could result in death or serious injury.

It may also be used to alert against unsafe practices.



Black letters on **YELLOW**

This signal word indicates a potentially hazardous situation which, if not avoided, will result in minor or moderate injury.

It may also be used to alert against unsafe practices.

GENERAL SAFETY RULES



WARNING

READ THIS OWNER'S MANUAL CAREFULLY BEFORE OPERATING THE PECO BRUSH BLAZER. DO NOT ALLOW ANYONE WHO IS NOT FAMILIAR WITH THE SAFETY AND OPERATING INSTRUCTIONS TO OPERATE THE PECO BRUSH BLAZER. FAILURE TO DO SO MAY RESULT IN SERIOUS INJURY OR DEATH

- Read all safety and operating instructions before using the machine.
- Do not operate the machine near people or animals.
- Remove any objects that could be thrown by the rotating blades.
- Always wear eye and ear protection when operating the machine.
- Keep body parts away from rotating belts and blades.
- Use caution when operating the machine on slopes. Keep a firm grip on the handle bars.
- Keep combustibles away from the engine when it is hot.
- Disengage the blades when crossing roads, sidewalks or gravel drives.
- Use extra caution when operating in slippery or wet conditions.
- Do not cut while in reverse or moving backwards. Use extra caution while moving backwards.
- Do not remove or alter standard parts on the machine. Doing so may result in serious injury and will void the warranty.
- Do not operate the machine when excessive noise or vibration is present. Immediately shut off the engine, disconnect the spark plug wire and allow all moving parts to come to a complete stop. Inspect for damage, then clean or repair damaged parts if necessary.
- Do not operate the machine while under the influence of alcohol or medication.
- Do not operate the machine in poor light conditions. Doing so may result in serious injury.
- Do not move up and down the face of slopes, always move across the face.
- Watch for holes, ruts and bumps. Tall grass can hide obstacles.
- Do not operate the machine on slopes greater than 20 degrees.
- Do not operate the machine on slopes that are wet or excessively steep.
- Keep children and pets out of the operating area, and under close adult supervision.
- Stop the machine immediately if children or pets enter the work area.
- Never allow children to operate the machine.
- Use extra caution when approaching shrubs, trees or other objects that may obscure your vision.
- Never run the engine in an enclosed area without proper ventilation. The exhaust contains carbon monoxide, which is a colorless, odorless, deadly poisonous gas.
- Allow the engine to cool down before filling the gas tank.
- Never make adjustments or repairs while the engine is running.
- Do not change the engine governor speed. Doing so may result in injury and will void the warranty.
- No list of warnings and cautions can be all-inclusive. If situations occur that are not covered by this manual, the operator must apply common sense and operate this machine in a safe manner.

• WARNING TO PURCHASERS OF INTERNAL COMBUSTION ENGINE EQUIPPED MACHINERY OR DEVICES IN THE STATE OF CALIFORNIA: The Brush Blazer does not have a spark arrester muffler. If this machine is to be used on any forest covered or brush covered land in the state of California, the law requires that a spark arrester must be attached to the exhaust system and must comply with Section 4442 of the California Public Resources Code.

•The Brush Blazer fuel tank is compliant with the California Air Resources Board (C.A.R.B)

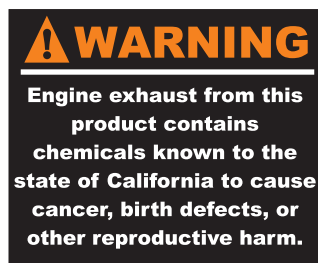
SAFETY DECALS



This label reminds you that flying debris is projected in the direction of these arrows. Anything or anyone within this field is in danger of being hit by flying debris.



This label lists safe operation procedures.



This label warns you of the dangers of carbon monoxide.



Do not operate the Brush Blazer without the hoods in place. Keep hands and other body parts away from rotating belts.



Keep hands and feet clear of the deck edge. Never reach under the mower deck until the blades have come to a complete stop.



This label reminds you that other people are in danger of being hurt by the blades and flying debris.

PECO LIMITED WARRANTY FOR NEW PRODUCTS

New PECO, Inc. extends the following warranties to the ORIGINAL PURCHASER of each New PECO, Inc. consumer product purchased from one of our Dealers or directly from New PECO, Inc., subject to the following limitations:

A. ITEMS COVERED UNDER WARRANTY

1. **PRODUCT WARRANTY** – Any part or parts which are deemed defective in material or workmanship, as delivered to the original purchaser, will either be repaired or replaced, as New PECO, Inc. elects, without charge for parts or labor, if the defect appears within 12 months from the date of purchase of the product to the Original Purchaser.
2. **PARTS REPLACED DURING WARRANTY** – Any New PECO, Inc. part which is furnished in performance of this warranty and is defective in material or workmanship as delivered to the purchaser will be repaired or replaced, as New PECO, Inc. elects, before the expiration of the original warranty period.

B. WARRANTY DISTINCTIONS

1. **RESIDENTIAL** - Products put to a personal use around a single household or residence are considered Residential. Products designated as “Residential” are warrantied for 12 months from the date of purchase of the product, to the ORIGINAL PURCHASER with proof of purchase, when used for or in residential applications.
2. **COMMERCIAL** – Products put to any business use (agricultural, commercial or industrial) or used at multiple locations are considered Commercial. Products designated as “Commercial” are warrantied for 12 months from the date of purchase of the product, to the ORIGINAL PURCHASER with proof of purchase, when used for or in commercial applications. Products designated as “Residential” are warrantied for 90 days from the date of purchase of the product, to the ORIGINAL PURCHASER with proof of purchase, when used for or in Commercial applications.
3. **RENTAL** – Products used for Rental or Lease Purposes are warrantied for 45 days from date of purchase of the product, to the ORIGINAL PURCHASER with proof of purchase, when used for or in a rental business.

C. ITEMS NOT COVERED BY NEW PECO WARRANTY

1. **ENGINES & BATTERIES:** Engines and Batteries attached to New PECO, Inc. products are covered under their respective separate manufacturer warranties and those companies must be contacted directly to file a warranty claim. Briggs & Stratton: https://www.briggsandstratton.com/na/en_us/support/warranty.html
2. **UNAPPROVED ALTERATION OR MODIFICATION:** All obligations of New PECO, Inc. under this warranty shall be terminated if products are altered or modified in any way not approved by New PECO, Inc.
3. **ACCIDENTS & NORMAL MAINTENANCE:** This warranty covers ONLY manufacturers defective material and workmanship. It does not cover depreciation or damage caused by normal wear & tear, accident, improper maintenance, misuse or abuse of products. New PECO, Inc. products must be operated and maintained in accordance with the instructions furnished in the manuals. The cost of normal maintenance and normal replacement of service items such as belts, cutting blades, hoses, bags, etc., which are not defective shall be paid for by the purchaser.
4. **NO SERVICE CENTER WARRANTY:** The selling Service Center/Dealer makes no warranty on his own on any item warranted by New PECO, Inc. unless he delivers to purchaser a separate written warranty certificate specifically warranting the item. The Service Center or Dealer has no authority to make any representation or promise on behalf of New PECO, Inc. or to modify the terms of the original warranty in any way.
5. **NO REPRESENTATIONS ADDITIONAL WARRANTIES, DISCLAIMER:** Neither New PECO, Inc. nor any company affiliated with New PECO, Inc. makes any warranties, representations or promises as to the quality of performance of its products other than those set forth herein. Except as described above, New PECO, Inc. makes no other warranties **AND SPECIFICALLY DISCLAIMS ANY AND ALL IMPLIED WARRANTIES OF FITNESS AND MERCHANTABILITY.**
6. **REMEDIED EXCLUSIVE:** The only remedies the purchaser has in connection with the breach or performance of any warranty on New PECO, Inc. consumer products are set forth above. In no event will New PECO, Inc. be liable for special incidental or consequential damages.

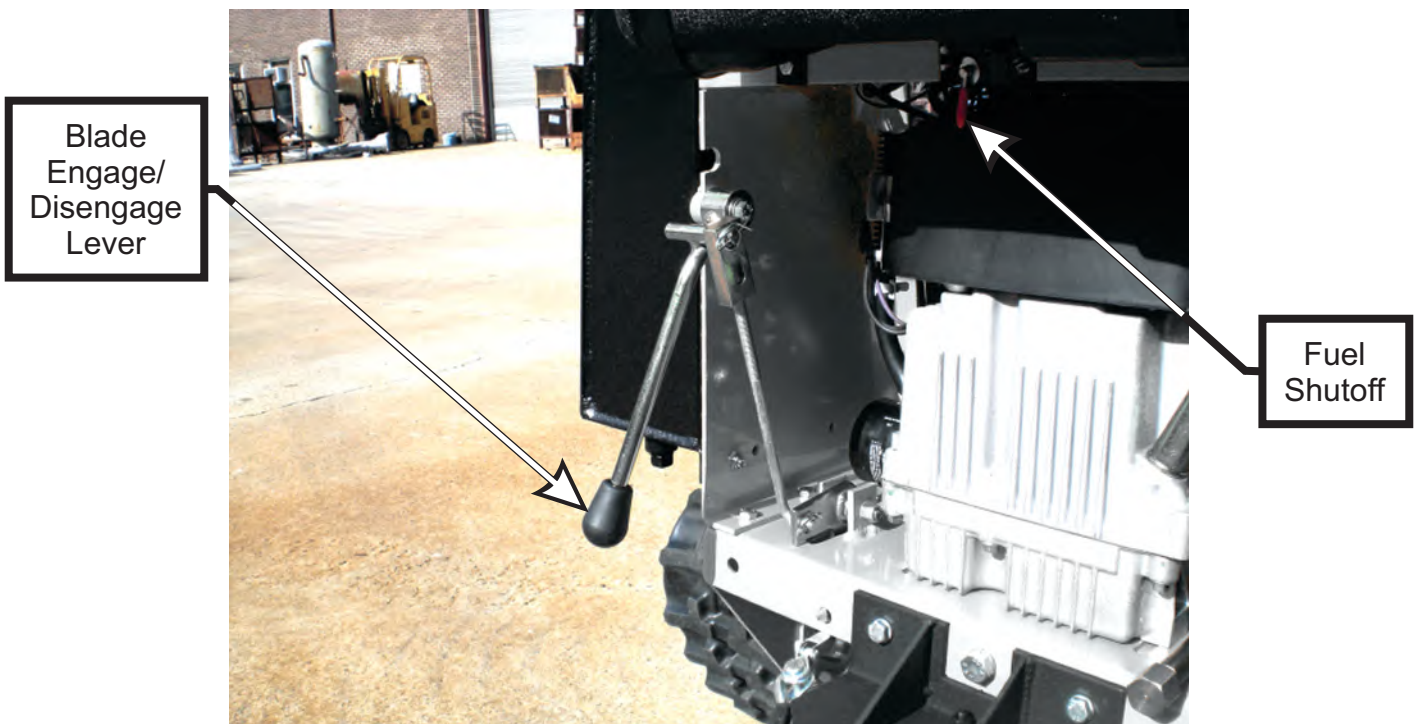
Warranty service is available through your local authorized service dealer or distributor. If you do not know the dealer or distributor in your area, search by your zip code on www.lawnvac.com or contact our Sales Department at New PECO, Inc. 800-438-5823 or email Sales@lawnvac.com.

CONTROLS

Instrument Cluster



Other Controls



OPERATION



WARNING

READ THE SAFETY AND OPERATION PROCEDURES BEFORE USING THE PECO BRUSH BLAZER. DO NOT LET ANYONE OPERATE THE PECO BRUSH BLAZER IF THEY HAVE NOT READ AND ARE FAMILIAR WITH THE SAFETY AND OPERATION PROCEDURES. FAILURE TO DO SO MAY RESULT IN SERIOUS INJURY OR DEATH.

The PECO Brush Blazer is equipped with an Operator Presence Switch located on the Left Steering Control Handle. Your left hand must be on the Left Steering Control Handle at all times when operating the machine. Removing your left hand from the Left Steering Control Handle will engage the kill switch on the engine. This feature is designed and installed for your safety. Familiarize yourself with the controls and descriptions in the section below.

Starting The Brush Blazer

1. Place Your Left Hand On The Left Steering Control Handle

2. Push The Throttle Control Forward



3. Turn The Key Switch To The Run Position And Wait For The Fuel Pump To Engage. Once The Fuel Pump Is Engaged, Turn The Key To The Start Position And Release

OPERATION

Forward Movement



Grab the front handle bar with your fingers and the Steering Control Handles with your thumbs. Push both Steering Control Handles forward at the same time to move forward. Push the controls slightly to move forward slowly. Pushing harder will increase the speed of your forward movement.



WARNING

USE EXTREME CAUTION WHEN OPERATING THE MACHINE IN REVERSE TO AVOID GETTING CAUGHT UNDER THE MACHINE. FAILURE TO DO SO MAY RESULT IN SERIOUS INJURY OR DEATH.

Reverse Movement



Grab the rear handle bar with your thumbs and the Steering Control Handles with your fingers. Pull the Steering Control Handles back, towards you, at the same time. Pull back slightly to move slowly in reverse. Pull back harder to increase the speed of your reverse movement.

Steering Left



Keep your left hand on the Left Steering Control Handle. Push the Right Steering Control Handle forward to steer to the left. Push the Right Steering Control Handle slightly to steer slowly. Pushing the control harder will execute a sharper turn.

OPERATION

Left Zero Turn Maneuver



Grab the Left Steering Control Handle with your left hand and pull back while at the same time grabbing the Right Steering Control Handle with your right hand and pushing forward. This will spin the machine left, without mowing forward.

Steering Right



Keep your right hand on the Right Steering Control Handle. Grab the Left Steering Control Handle with your left hand and push forward to steer right. Push the control forward slightly to steer slowly. Pushing the control harder will execute a sharper turn.

Right Zero Turn Maneuver



Grab the Left Steering Control Handle with your left hand and push forward while at the same time grabbing the Right Steering Control Handle with your right hand and pulling back. This will spin the machine right, without mowing forward.

OPERATION



WARNING

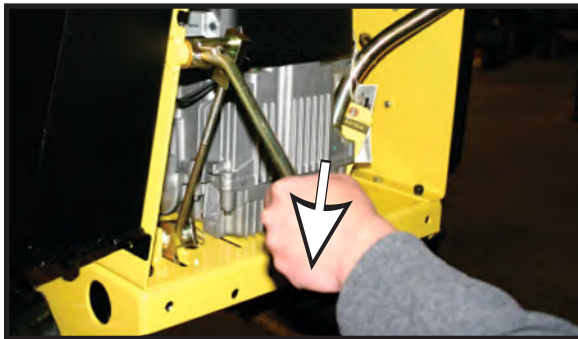
THE BRUSH BLAZER CAN EASILY THROW STONES, STICKS AND OTHER DEBRIS AT GREAT VELOCITY, POSSIBLY CAUSING PROPERTY DAMAGE OR PERSONAL INJURY. DO NOT RUN THE BRUSH BLAZER OVER GRAVEL DRIVEWAYS, LOOSE STONES OR MULCH WITH THE BLADES ENGAGED. IF NECESSARY TO CLEAR DEBRIS FROM MOWER DECK, DISENGAGE THE BLADE, TURN THE KEY SWITCH TO THE OFF POSITION AND DISCONNECT THE SPARK PLUG WIRE.

Blade Engagement/Disengagement



Engagement

While holding the Left Steering Control Handle with your right hand, reach down and pull up **slowly** on the Blade Engagement Control with your left hand.



Disengagement

While holding the Left Steering Control Handle with your right hand, push the Blade Engagement Control down with your left hand.

Tips On Brush Cutting

Obstacles: Always check your work area before mowing and remove any debris that might get tangled in or damage the machine. If the mower becomes tangled, turn off the engine and disconnect the spark plug wire before reaching into the mower deck area.

Slopes: Do not operate the Brush Blazer on slopes more than 20 degrees. If you have to operate the machine on sloping terrain, move across the face of the slope, not up and down.

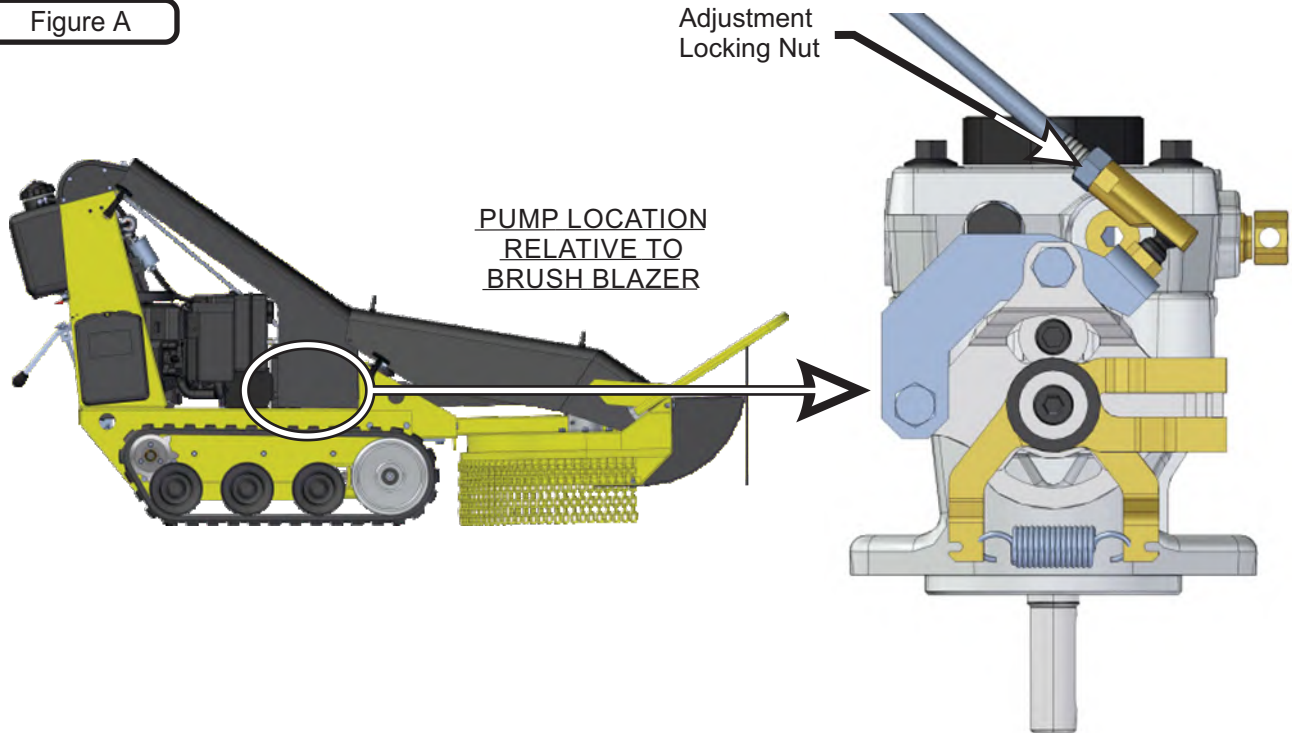
If The Machine Gets Hung Up: Disengage the blade immediately. Try moving in reverse and backing away from the obstacle.

Cutting Brush And Saplings: The Brush Blazer can cut saplings up to 4" in diameter. When cutting saplings or brush, allow the Brush Blazer to ride up and over the material slowly. Adjust your forward speed to varying conditions. After cutting brush or saplings, you may want to mow over it again to remove any remaining branches. It is recommended to mow from the trunk end toward the top as the brush lies on the ground.

Cutting In Wet Conditions: Use extreme caution when cutting in wet or slippery conditions. Avoid steep slopes or other slippery areas. Use a lower speed when conditions are wet or slippery.

PUMP ADJUSTMENT

Figure A



Travel Adjustment:

Pulling To The Left -

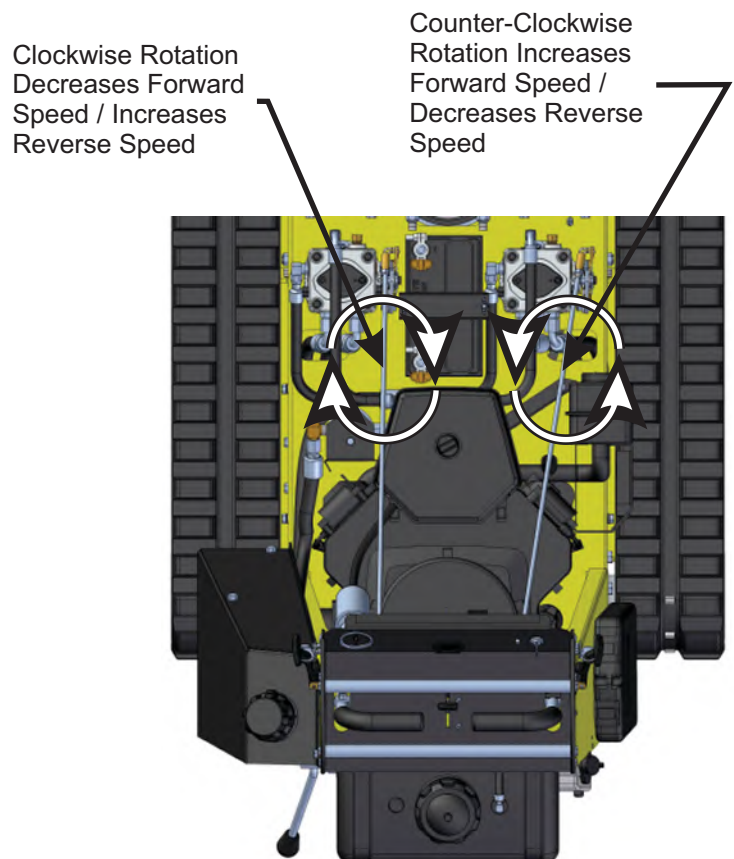
If the machine pulls to the left when traveling forward, adjust the Left FRS Rod by first loosening the Adjustment Locking Nut (Figure A). Next turn the Left FRS Rod counter-clockwise one full revolution (This action will lengthen the Rod, which will increase the speed of the Left Motor and even out forward speeds), tighten the Adjustment Locking Nut and test forward travel (Figure B).

Pulling To The Right -

If the machine pulls to the right when traveling forward, adjust the Right FRS Rod by first loosening the Adjustment Locking Nut (Figure A). Next turn the Right FRS Rod counter-clockwise one full revolution (This action will lengthen the rod, which will increase the speed of the right motor and even out forward speeds), tighten the Adjustment Locking Nut and test forward travel (Figure B).

Note: If the forward travel still pulls to either the left or right, repeat the corresponding step above.

Figure B



PUMP BELT ADJUSTMENT

The Pump Belt should be checked periodically for the correct tension. There should be 1" of movement for 10 lbs. of tension applied to the center of the Belt. To adjust the Belt, follow the steps below and refer to the figures below:

1. Use a floor jack to raise the machine off the ground and blocks to support the chassis and deck.
2. Remove the Chassis Rear Guard and the Chassis Pan (Figure A).
3. Check the tension on the Belt using a belt tension gauge (Figure B).
4. If the belt tension needs adjustment, loosen the Pump Belt Idler Bolt (Figure C).
5. Push the Pump Belt Idler forward to increase the tension, then tighten the Pump Belt Idler Bolt.
6. Check the tension on the belt again, and adjust the Pump Belt Idler if necessary.
7. Replace the Chassis Rear Guard and the Chassis Pan.

Figure A

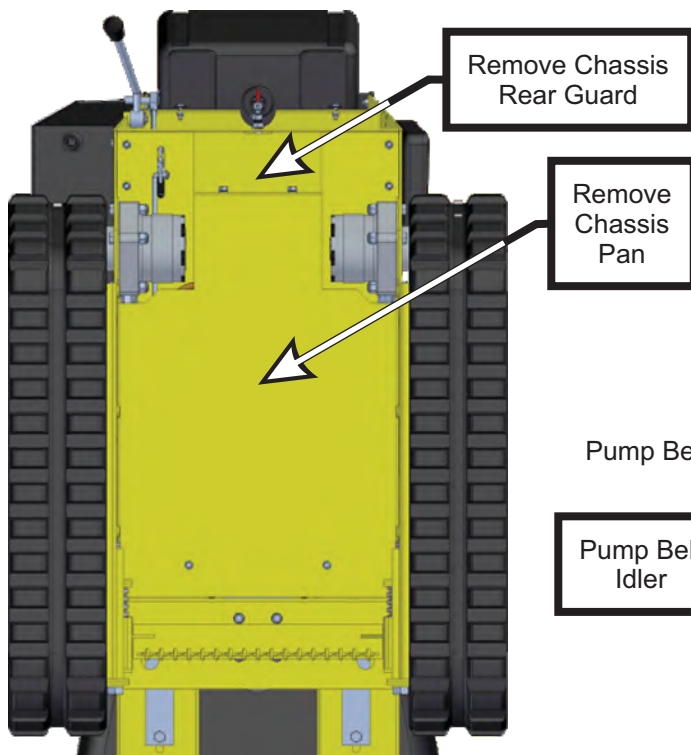


Figure B

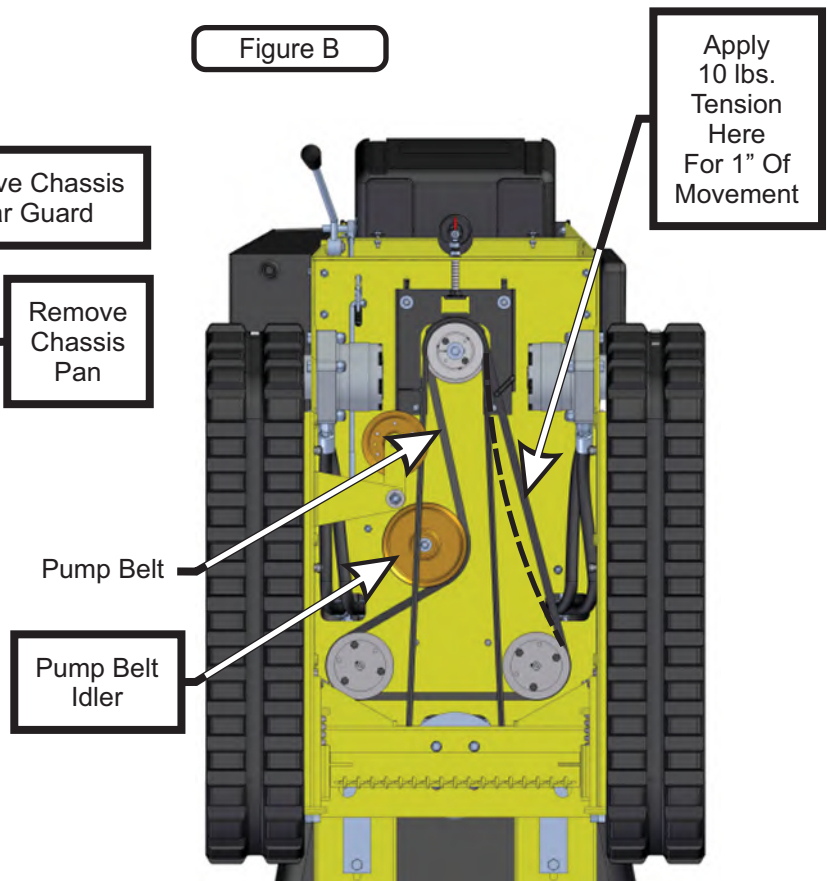
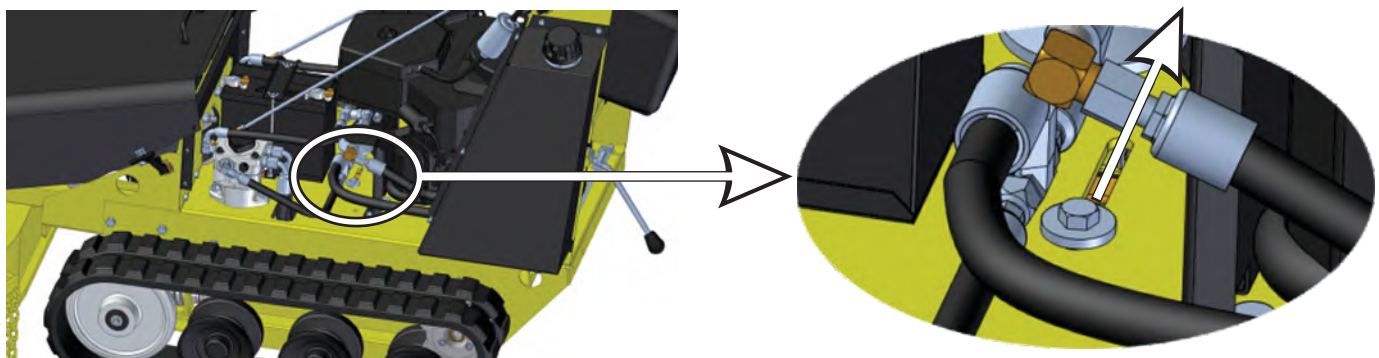


Figure C



Pump Belt Idler Bolt Location
Relative To Brush Blazer

Direction To Move Pump
Belt Idler Bolt To Increase
The Pump Belt Tension

DRIVE BELT IDLER ADJUSTMENT

When the Blade Engagement Control is disengaged, the Engine Pulley should freely spin without turning the Belt or Blades. The Drive Belt Idler must be checked periodically to ensure that the tension is correct, Follow the steps below and refer to the figures for reference:

1. Make sure the Blade Engagement Control Handle is disengaged.
2. Remove the Winch Assembly, if you have one equipped, Chassis Rear Guard and the Chassis Pan (See Page 12 Figure A).
3. Place tension on the Drive Belt as shown in the Figure B.
4. Measure the gap between the Idler and the Belt. There should be 1/8"-3/16" gap between the Idler and the Belt.

If The Idler Needs To Be Adjusted -

1. Remove the Cotter Pin from the end of the Adjustment Rod and remove the end of the Adjustment Rod from the Clutch Control Crank (Figure A).
2. Turn the Adjustment Rod clockwise to move the Idler closer to the Belt, or counter-clockwise to move the Idler away from the Belt.
3. Once the gap between the Idler and the Belt is correct, insert the Adjustment Rod into the Clutch Control Crank and fasten with the Cotter Pin.
4. Replace the Winch Assembly, if applicable, Chassis Rear Guard and the Chassis Pan.

Figure A

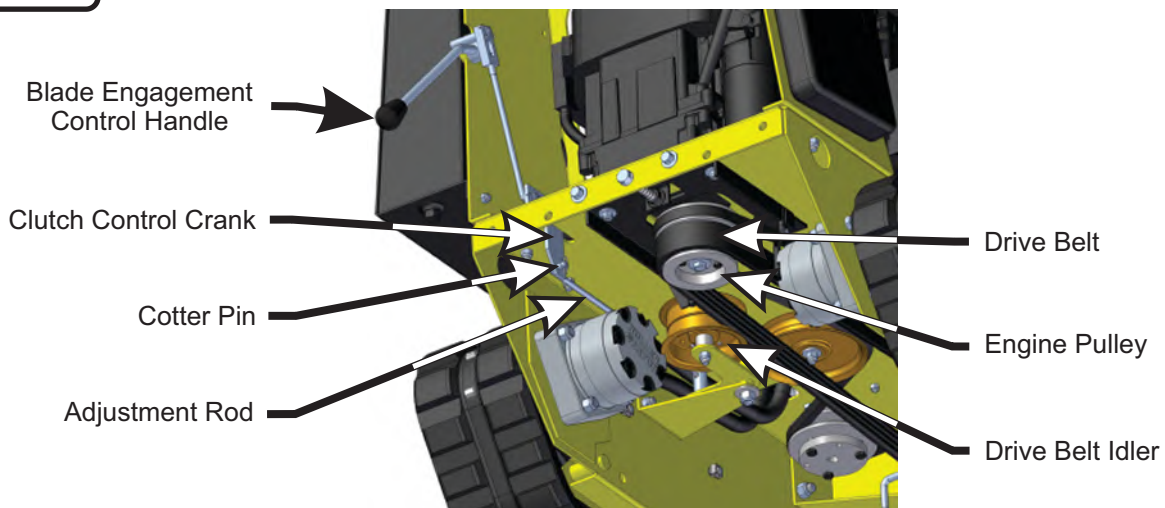
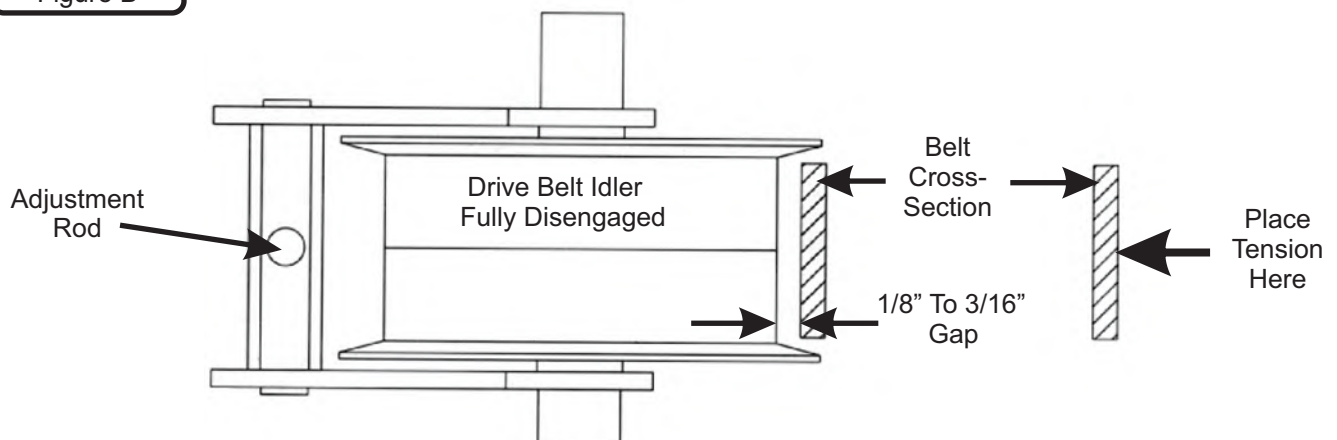


Figure B

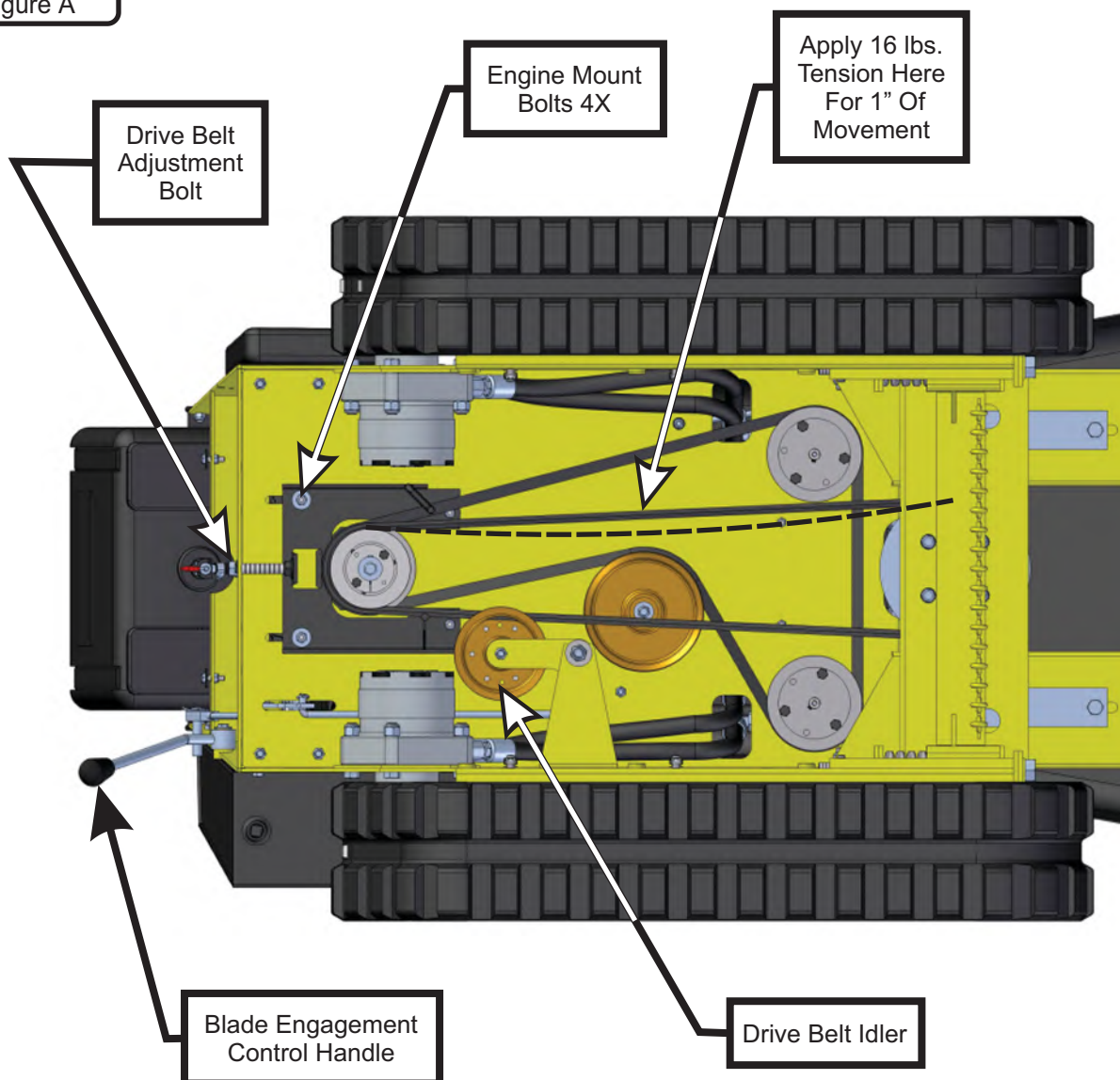


DRIVE BELT ADJUSTMENT

The Drive Belt should be checked periodically for the correct tension. There should be 1" of movement for 16 lbs. of tension applied to the center of the Belt. Apply the tension to the center of the Belt, on the side of the Belt opposite the Drive Belt Idler. To adjust the Belt, follow the steps below and refer to Figure A for reference:

1. Use a floor jack to raise the machine off the ground and blocks to support the chassis and deck.
2. Remove the Winch Assembly, if you have one equipped, Chassis Rear Guard and the Chassis Pan (See Page 12 Figure A).
3. Engage the Blade Engagement Control Handle by putting in the 'Up' position (Figure A).
4. Use a tension gauge to check the tension on the Drive Belt. Apply tension to the center of the Belt, on the side opposite the Drive Belt Idler. The correct tension is 1" of movement for 16 lbs. of tension applied to the center of the Belt.
5. If the Belt needs adjustment, first loosen the (4) Engine Mount Bolts, then turn the Drive Belt Adjustment Bolt clockwise to increase the tension or counter-clockwise to decrease the tension.
6. When the desired belt tension is achieved, tighten the (4) Engine Mount Bolts.
7. Disengage the Blade Engagement Control Handle by putting in the 'down' position.
8. Replace the Winch Assembly, if applicable, Chassis Rear Guard and the Chassis Pan.

Figure A

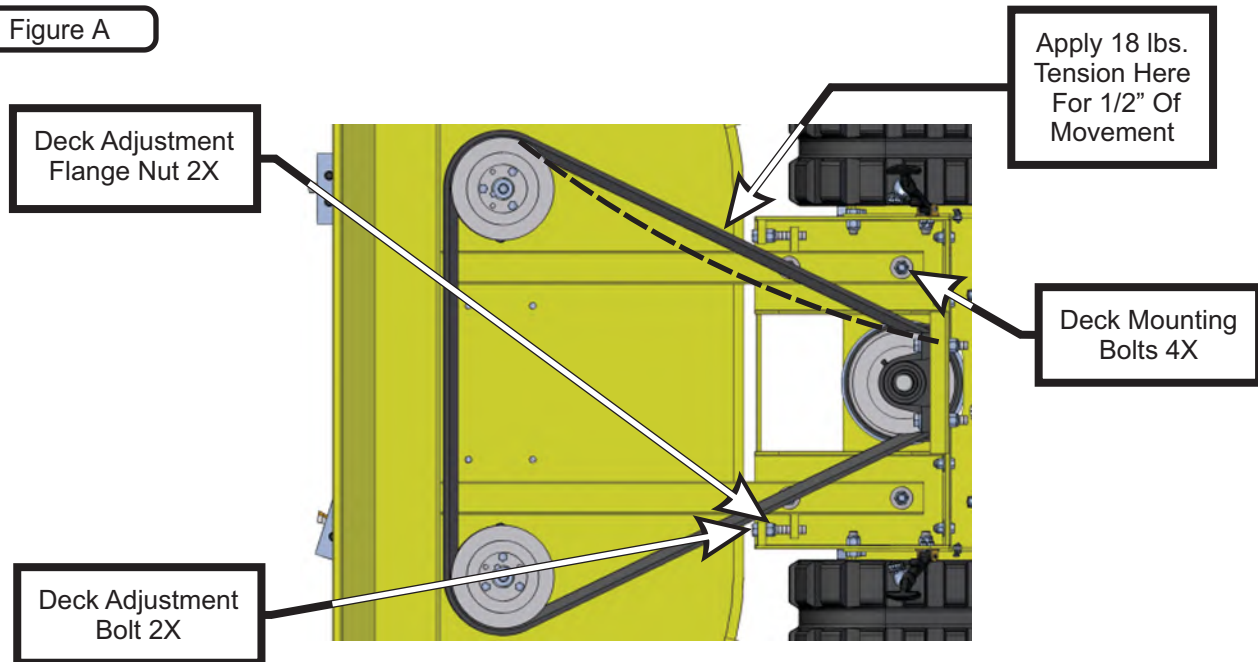


DECK BELT ADJUSTMENT

The Deck Belt should be checked periodically for the correct tension. The Deck Belt should move 1/2" with 18 lbs. of tension on the Belt. To adjust the tension on the Belt follow the steps below and use the figure for reference:

1. Place tension on the center of the Deck Belt as shown in Figure A.
2. If the Belt needs adjustment, loosen the (4) Deck Mounting Bolts.
3. Loosen the (2) Deck Adjustment Flange Nuts.
4. Turn each of the Adjustment Bolts clockwise to increase tension or counter-clockwise to decrease tension.
5. When proper tension is achieved, tighten the Deck Adjustment Flange Nuts.
6. Tighten the Deck Mounting Bolts.

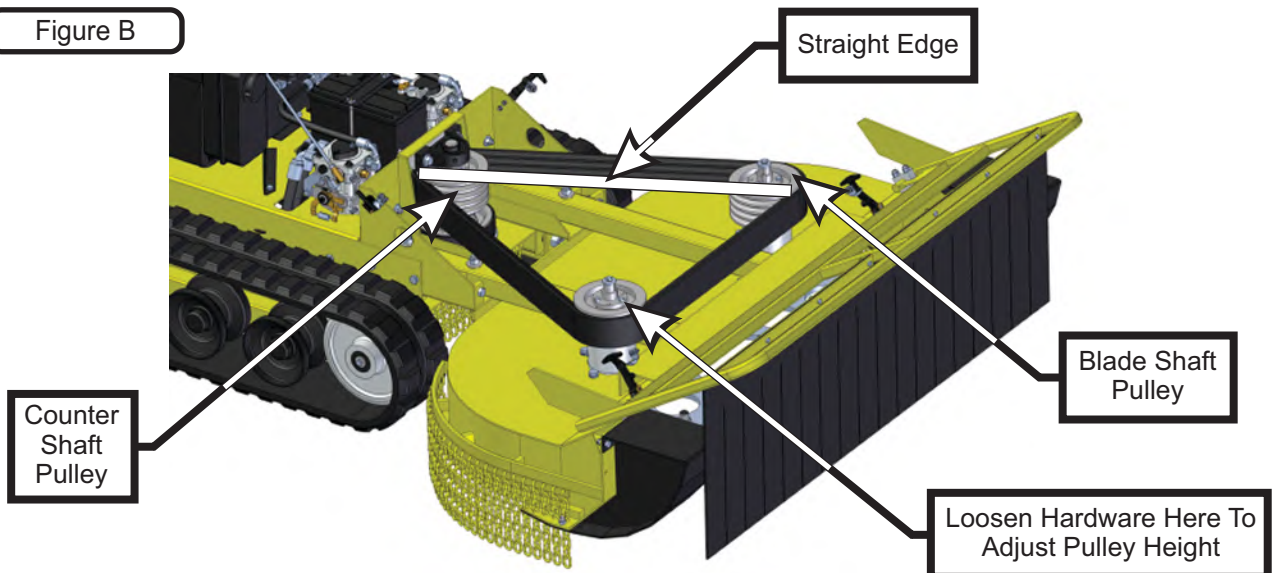
Figure A



MOWER DECK PULLEY ALIGNMENT

1. Use a plumbers level on the Counter Shaft Pulley.
2. Use a 30" straight edge to level the Blade Shaft Pulleys with the Counter Shaft Pulley (Figure B)
3. Use a 30" straight edge to level the Blade Shaft Pulleys with each other.
4. If necessary, loosen the hardware on the Pulley Sleeve shown in the figure below and adjust the Pulley as needed.

Figure B



DECK AND DRIVE BELT REMOVAL/REPLACEMENT

Use the following procedure for removal and replacement of the Drive and Deck Belts:

Removal:

1. Remove the Drive Belt Adjustment Bolt from the Rear Chassis of the machine. (Figure A)
2. Loosen the (2) Front Engine Mounting Bolts (Figure B)
3. Remove the (2) Rear Engine Mounting Bolts along with the Main Drive Take-Up Assembly (Figure B)
4. Loosen the tension on the Drive Belt by pushing the Engine forward.
5. Remove one end of the Drive Belt from the Engine Pulley (Figure C)
6. Loosen the (4) Deck Mounting Bolts (Figure D)
7. Remove the Deck Adjustment Bolts (Figure D)
8. Push the Deck back as far as possible to loosen the tension on the Deck Belt (Figure E)
9. Remove the (2) Bolts on the Pillow Block Bearing (Figure F)
10. Pivot the Counter Shaft forward (Figure G)
11. With the Counter Shaft pivoted forward, remove the Deck Belt and Drive Belt from the Pulleys on the Counter Shaft (Figure H)

Replacement:

1. Wrap one end of the Drive Belt around the lower Pulley on the Counter Shaft and feed the Belt towards the Engine Pulley.
2. Wrap the Deck Belt Pulley around both Blade Pulleys and the Counter Shaft Pulley.
3. Pivot the Counter Shaft backwards and replace the (2) Bolts in the Pillow Block Bearing.
4. Wrap the other end of the Drive Belt around the Engine Pulley.
5. Replace the Main Drive Take-Up and Rear Engine Mounting Bolts. Leave the Engine Mounting Bolts loose at this time.
6. Replace the Drive Belt Tension Bolt.
7. Slide the Engine as far back as possible to increase the tension on the Belt.
8. Tension the Drive Belt (See page 14 for Drive Belt tensioning procedure)
9. Tighten the Engine Mounting Bolts after the Drive Belt has the correct tension.
10. Pull the Deck forward to increase the tension on the Deck Belt.
11. Replace the Deck Adjustment Bolts.
12. Tension the Deck Belt (See page 15 for Deck Belt Tensioning procedure)

Figure A

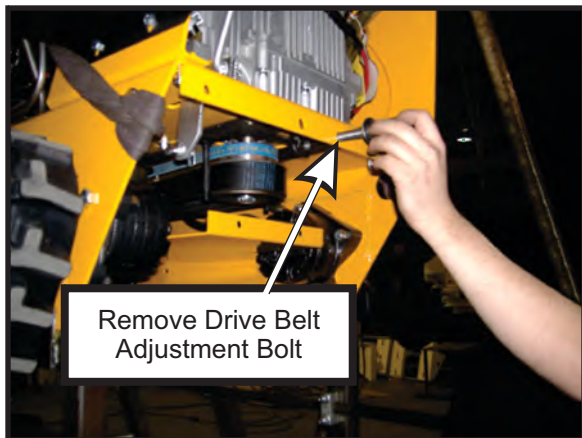
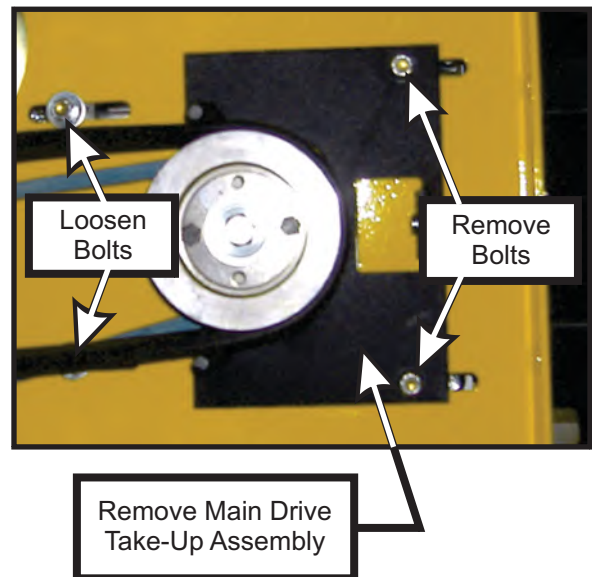


Figure B



DECK AND DRIVE BELT REMOVAL/REPLACEMENT

Figure C

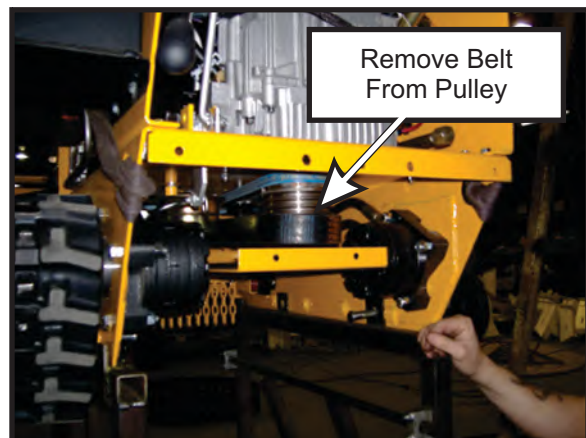


Figure D

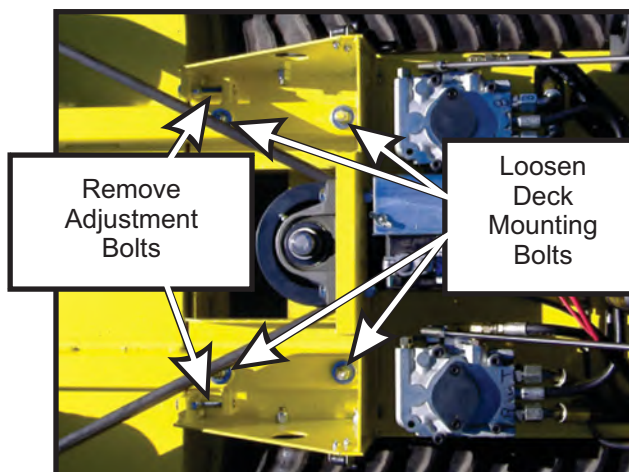


Figure E



Figure F

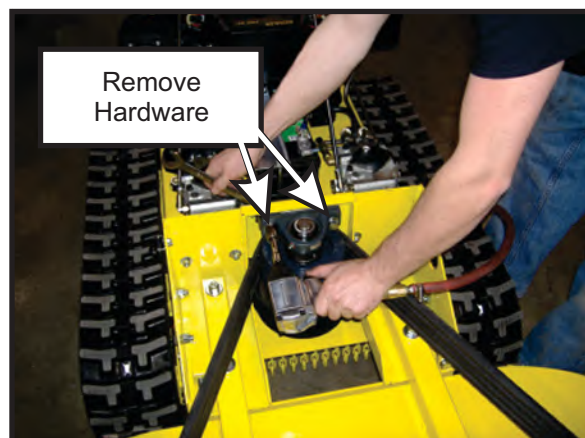


Figure G

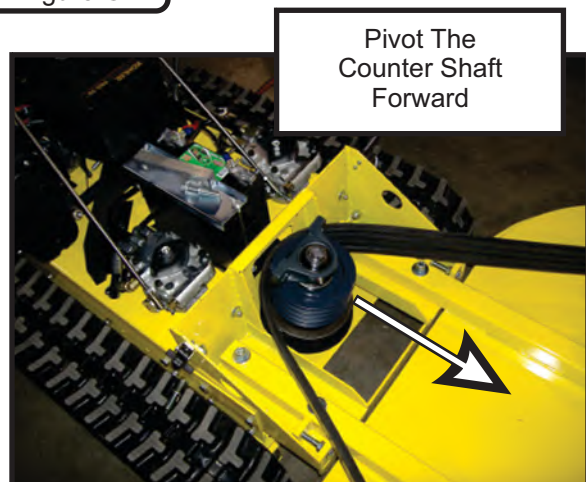
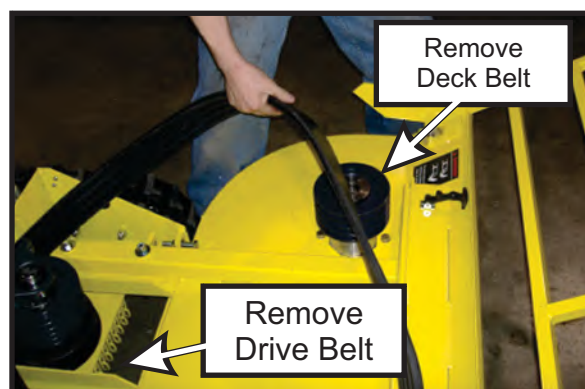


Figure H



TRACK REMOVAL/REPLACEMENT

Removal:

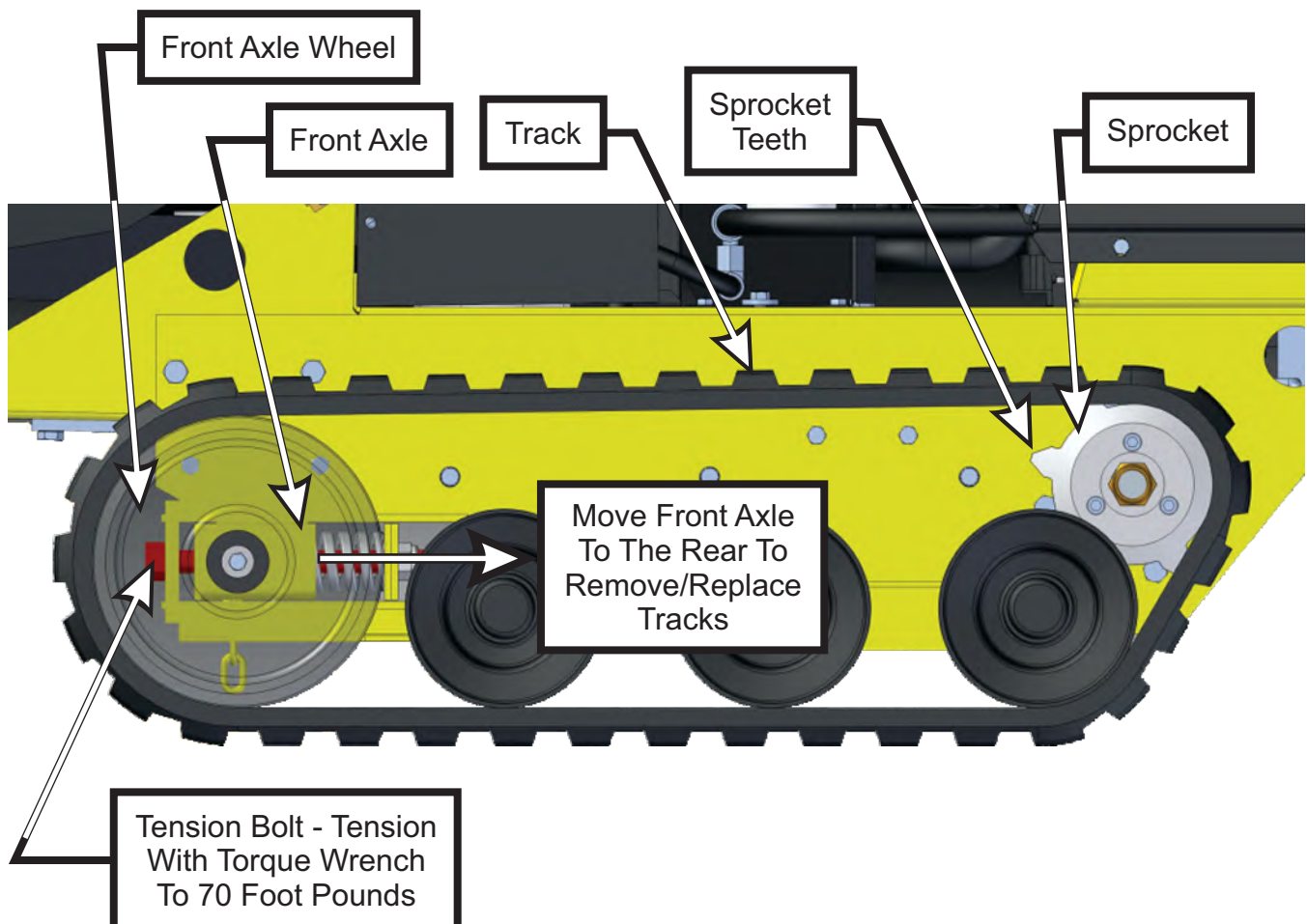
1. Remove the tension from the Front Axle by turning the Tension Bolts counter-clockwise located on each side of the Brush Blazer (Figure A).
2. With the Tension Bolts fully loosened, you can then push the Complete Front Axle towards the rear of the Brush Blazer to gain enough slack in the track to remove it from the machine.
3. Remove one or both Tracks from the machine.

Replacement:

1. Remove the tension from the Front Axle by turning the Tension Bolts counter-clockwise located on each side of the Brush Blazer (Figure A).
2. With the Tension Bolts fully loosened, you can then push the Complete Front Axle towards the rear of the Brush Blazer.
3. Place the Track onto the Rear Sprocket first and align the Sprocket teeth to the center of the Track allowing a greater length of slack to be in the Track.
4. Place the loose end of the Track around the Front Axle Wheel.
5. Repeat Steps 3 & 4 if installing both Tracks.
5. With a torque wrench, tension each Tension Bolt (clockwise) to a minimum of 70 foot pounds of torque.

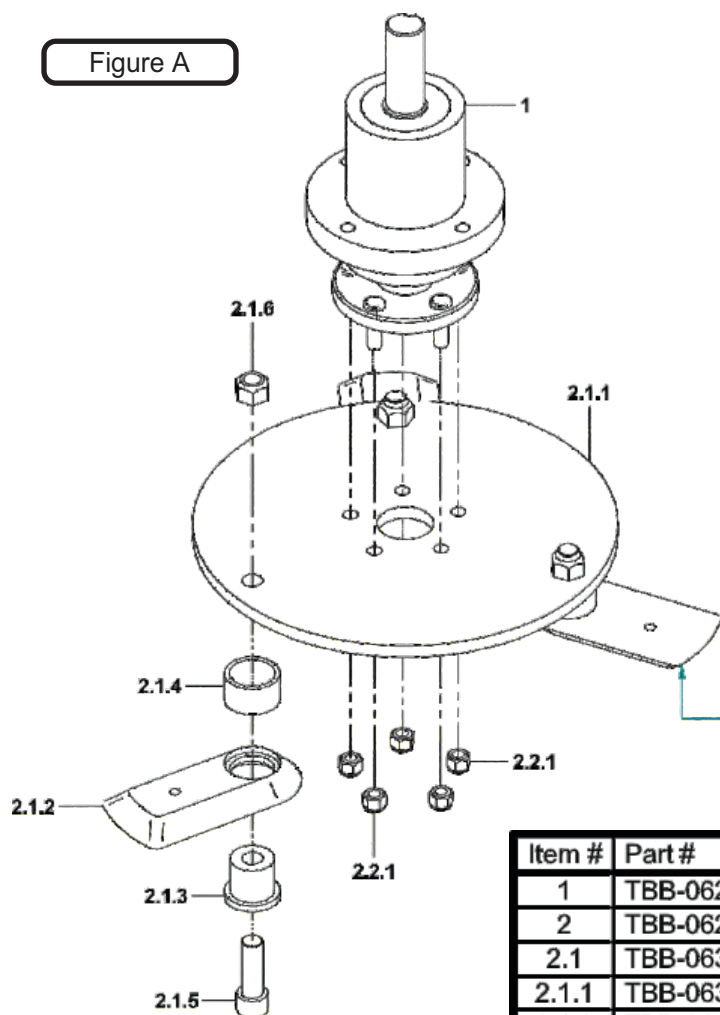
Note: The tread of the Track is not uni-directional. The point of the 'V' in the tread should point away from the direction that requires more traction.

Figure A



Blade Shaft Assembly

Figure A



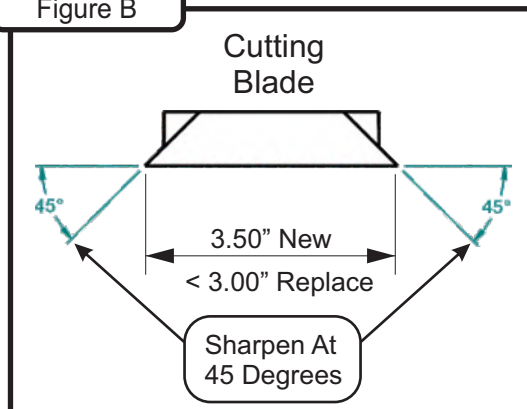
During Assembly,
Always Position (1)
Blade Upside-Down.
This Results In Better
Cutting Performance.



WARNING

Stop The Engine, Remove Battery + Cable And Support The Deck Before Working Underneath. Failure To Do So May Result In Serious Injury Or Death.

Figure B



Item #	Part #	Desc.	Qty.
1	TBB-0620	Blade Shaft/Flange/Hub Kit	1
2	TBB-0629	Blade Kit / Single Shaft	1
2.1	TBB-0630	Blade Assy. / Single Shaft	1
2.1.1	TBB-0631	Blade Support	1
2.1.2	TBB-0632	Flail Blade	3
2.1.3	TBB-0456	Pivot Bushing / Flail Blade	3
2.1.4	TBB-0457	Spacer Bushing / Flail Blade	3
2.1.5	K0298	3/4"-10 x 2-1/4" SHCS	3
2.1.6	K0302	3/4"-10 Stover Lock Nut Grade C	3
2.2	HB0598	Mnt. HW / Blade Kit	1
2.2.1	K1018	1/2-20 Nyloc Nut	5

Blade - Removal / Inspection / Sharpening / Replacement

- Note:** Please heed Warning above before attempting any repairs
- Preparation:** With the Brush Blazer positioned securely on level ground, strap the Tree Gate Assembly in the "UP" position to allow access to the cutting Flail Blades.
- Removal:** For a single Blade, remove the Socket Head Cap Screw (#2.1.5) & Stover Lock Nut (#2.1.6). Repeat for the other Blades. See Figure A.
- Inspection:** Visually inspect each Blade for damage. Warped, bent, severely broken or chipped Blades should be replaced.
- Sharpening:** Before sharpening, determine if the Blade's width falls between the dimensions in Figure B. If the Blade width is less than 3", replace the Blade. Sharpen the edge of the Blade using a file or a grindstone, keeping it at a roughly 45-degree angle, following the angle of the existing edge. Take care to even out rough spots.
- Replacement:** See Figure A. Insert the Cap Screw (#4) through items (#7), (#3), (#6), & (#2). Fasten the cap screw (#4) using the previously removed stover lock nut (#5). If replacing all (3) Flail Blades, be certain to position one blade (per shaft assembly) upside-down, see note in Figure A. Torque each bolt to the specified torque settings in the back of this manual.

LABEL REPLACEMENT PART NUMBERS

R2002

BRUSH  BLAZER

R1040

HYDRAULIC OIL

R1099



R1093

**UNLEADED
GAS
ONLY**

R1047



R2000



R2004



R1046



R1045



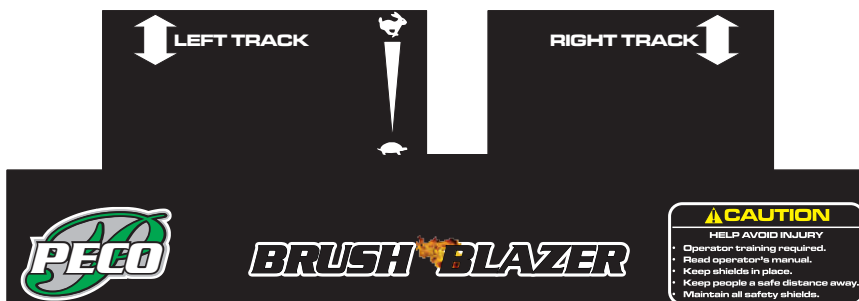
R1044



R1098



R2001



R2003



REGULAR MAINTENANCE

Battery Replacement:

1. Remove the deck and engine hood.
2. Disconnect the negative (-) battery cable.
3. Disconnect the positive (+) battery cable.
4. Remove the battery hold down clamp.
5. Remove the battery.
6. Clean the terminals and cable ends.
7. Install the new battery and replace battery hold down clamp.
8. Connect the positive (+) battery cable.
9. Connect the negative (-) battery cable.
10. Replace the deck and engine hood.

Electrical System Service:

1. Make sure the battery cables and terminals are clean and fastened tightly.
2. Check the electrolyte level in the battery often.
3. Remove any build-up or corrosion on the battery with a baking soda and water solution.
4. Cover the battery terminals with grease to prevent corrosion.
5. Check all electrical wires for loose connections.

Air Filter Replacement:

1. Remove the deck and engine hood.
2. Remove the Donaldson air filter cover.
3. Remove the air filter from the housing.
4. Replace the air filter.
5. Replace the Donaldson air filter cover.
6. Replace the deck and engine hood.

End Of Season Storage:

- Change the oil and oil filter.
- Clean and replace the pre-cleaner filter.
- Clean any dirt and debris from the muffler area of the engine.
- If storing longer than 30 days, use a gas stabilizer.
- Close the fuel shut-off valve.
- Remove any grass, weeds or brush from the blade and deck area.
- Store the battery in a dry area that will not freeze.
- Remove, sharpen or replace blades as necessary.

Engine Service:

1. Refer to the Kohler or Briggs & Stratton service manual for instructions.

Grease:

Grease all fittings (Blade Shaft, Counter Shaft) every 20 hours of operation.

Lubricate with the following greases or their equivalent:

Shell Alvania EP Grease No. 2 - Gulf Gulfcrowne Grease No. 2 -
Texaco Molytex Grease No. 2 - American Amolith Grease No. 2 -
Mobil Mobilux EP2

SCHEDULED REPLACEMENT PARTS LIST

Note: These are only recommended replacement times. The replacement times on the parts in this list will vary depending on the work environment and operating habits.

Description	Part #	Hours	Required
Deck Belt (AB-95/04 B)	M0232	400	01
Pump Belt (A-5VX830)	M0305	500	01
Drive Belt (4/3VP800)	M0233	300	01
Blade Support	TBB-0454	600	02
Flail Blade	TBB-0455	020	06
Pivot Bushing / Flail Blade	TBB-0456	300	06
Spacer Bushing / Flail Blade	TBB-0457	300	06
3/4"-10 x 2-1/4" SHCS / Flail Blade	K0298	300	06
3/4" Stover Lock Nut / Flail Blade	K0302	300	04
1/2"-20 Nyloc Nut / Blade Support	K1018	600	10
Oil Filter / Zinga / Hydraulics	U0030	050	01
Kohler Engine Oil Filter	TBB-0239	200	01

HYDRAULIC OIL

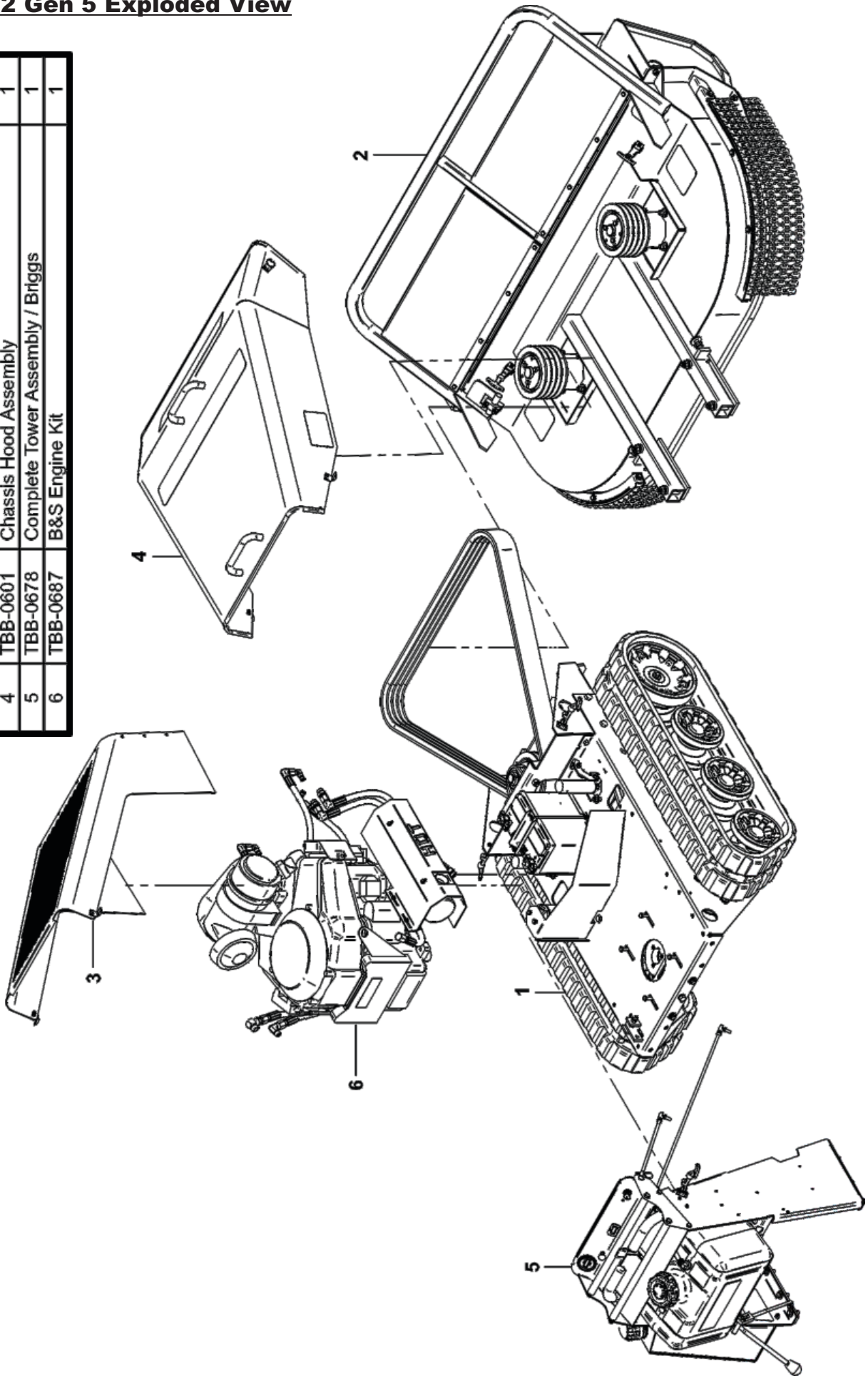
Initially, change the hydraulic oil after 50 hours, then change the oil after every 250 hours.

When replacing hydraulic oil, the following grades and levels are approved for the Brush Blazer:

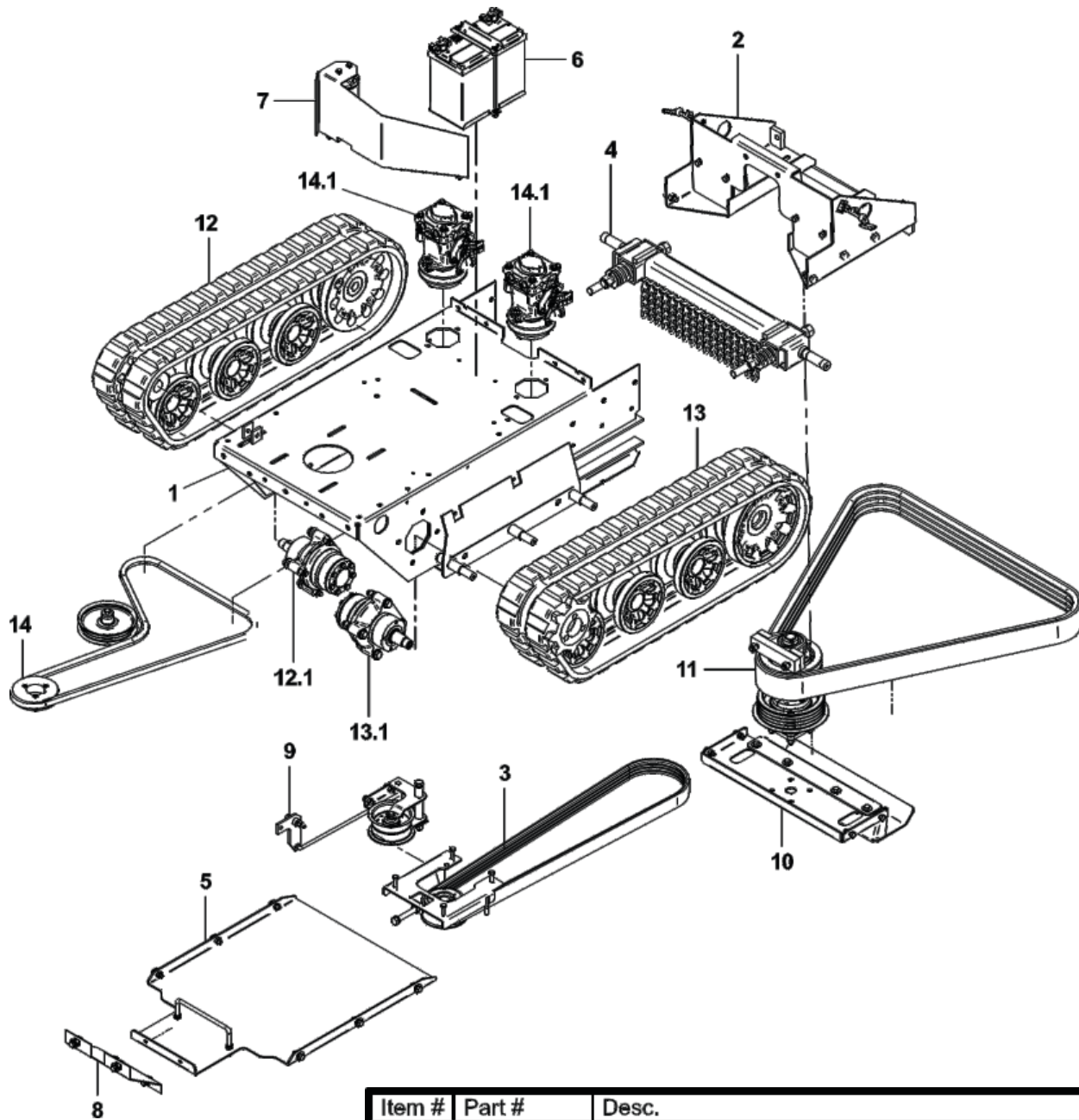
- Aero Shell 15W-50 (Factory Equipped)
- Mobil 1 Synthetic 5W-30, 10W-30, 15W-50
- Amoco Ultimate 10W-40
- Shell Gemini 10W-40, 15W-50
- Helix Ultra 5W-40, 10W-40
- Mobil Super HP 10W-40, 20W-50
- Viscosity Oil 10W-40

TBB-3002 Gen 5 Exploded View

Item #	Part #	Desc.	Qty.
1	TBB-0671	Complete Chassis Assembly	1
2	TBB-0628	Complete Deck Assy. / Gen 5	1
3	TBB-0600	Deck Hood Assembly	1
4	TBB-0601	Chassis Hood Assembly	1
5	TBB-0678	Complete Tower Assembly / Briggs	1
6	TBB-0687	B&S Engine Kit	1



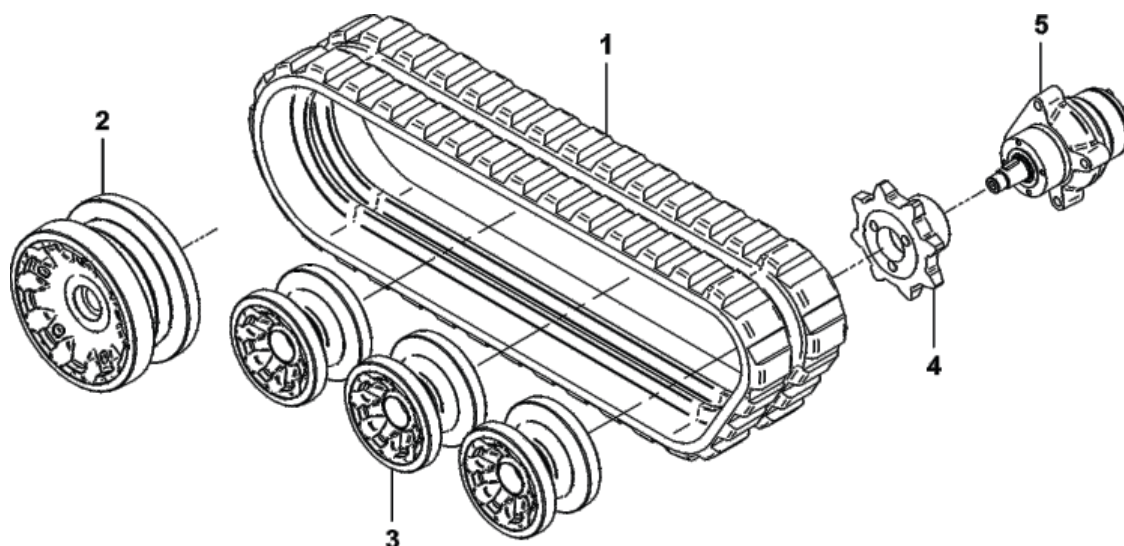
TBB-0671 Complete Chassis Assembly Exploded View



Item #	Part #	Desc.	Qty.
1	TBB-0415	Chassis Weldment	1
2	TBB-0662	C-Drive Mount Kit	1
3	TBB-0660	Main Drive Kit	1
4	TBB-0654	Front Axle Kit	1
5	TBB-0667	Lower Pan Kit	1
6	TBB-0668	Battery Kit	1
7	TBB-0670	Oil Filter Kit	1
8	TBB-0679	Rear Guard Kit	1
9	TBB-0655	Clutch Idler Pulley Kit	1
10	TBB-0659	Lower Counter Shaft Mount Kit	1
11	TBB-0657	C-Shaft Drive Kit	1
12	TBB-0651	LT Track Kit	1
12.1	TBB-0650	LT Hydro Motor Kit	1
13	TBB-0652	RT Track Kit	1
13.1	TBB-0649	RT Hydro Motor Kit	1
14	TBB-0666	Hydraulic Drive Kit	1
14.1	TBB-0665	Hydraulic Pump Drive Kit	2

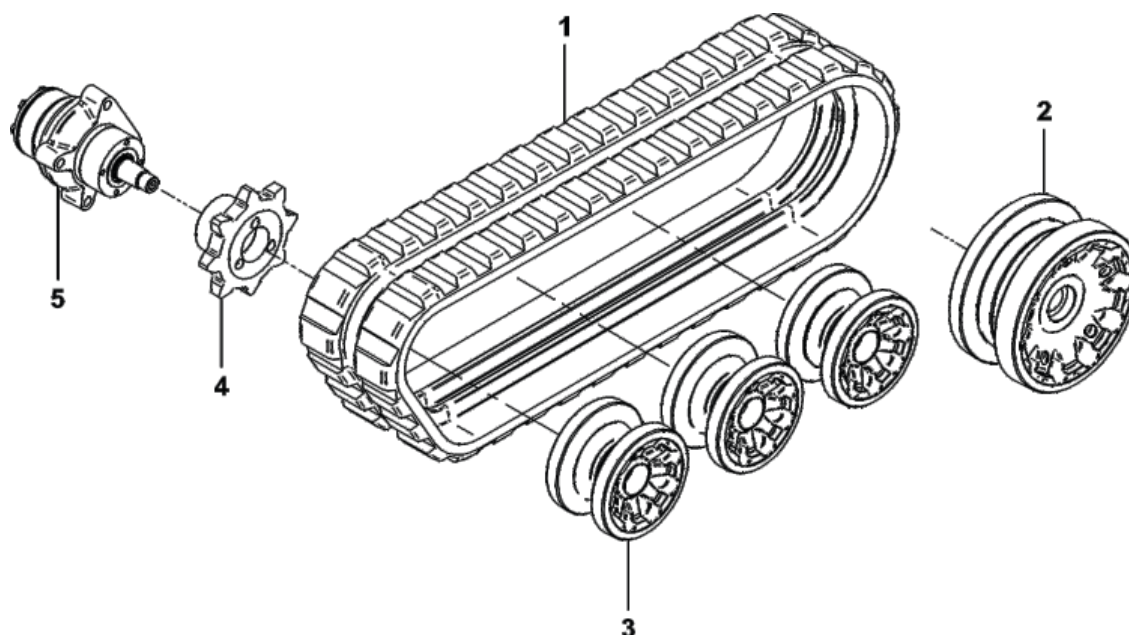
TBB-0651 Left Track Kit Exploded View

Item #	Part #	Desc.	Qty.
1	H0143	RUBBER TRACK	1
2	TBB-0647	Front Axle Wheel Kit	1
3	TBB-0646	Bogey Wheel Kit	3
4	TBB-0648	Drive Sprocket Kit	1
5	TBB-0650	LT Hydro Motor Kit	1

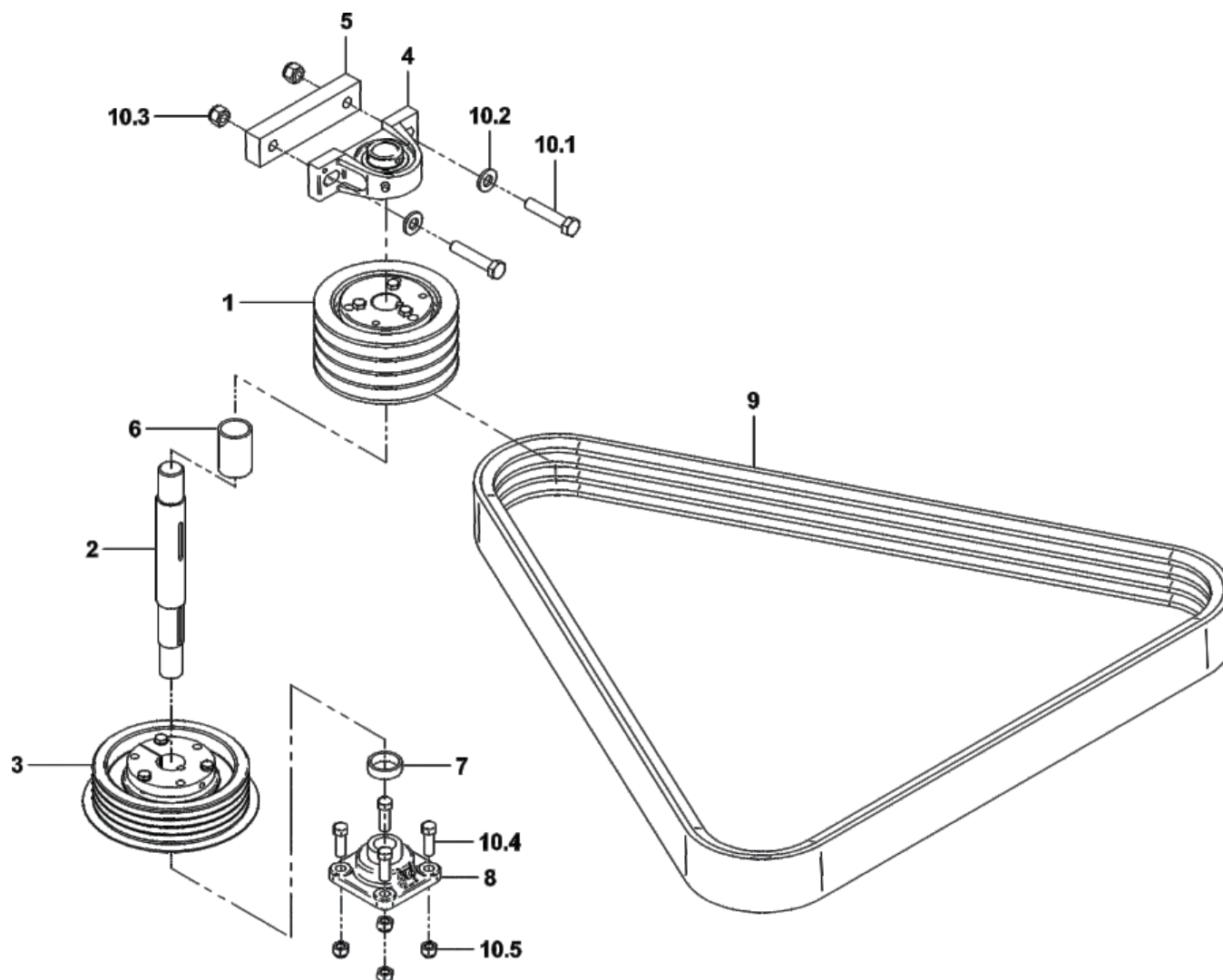


TBB-0652 Right Track Kit Exploded View

Item #	Part #	Desc.	Qty.
1	H0143	RUBBER TRACK	1
2	TBB-0647	Front Axle Wheel Kit	1
3	TBB-0646	Bogey Wheel Kit	3
4	TBB-0648	Drive Sprocket Kit	1
5	TBB-0649	RT Hydro Motor Kit	1

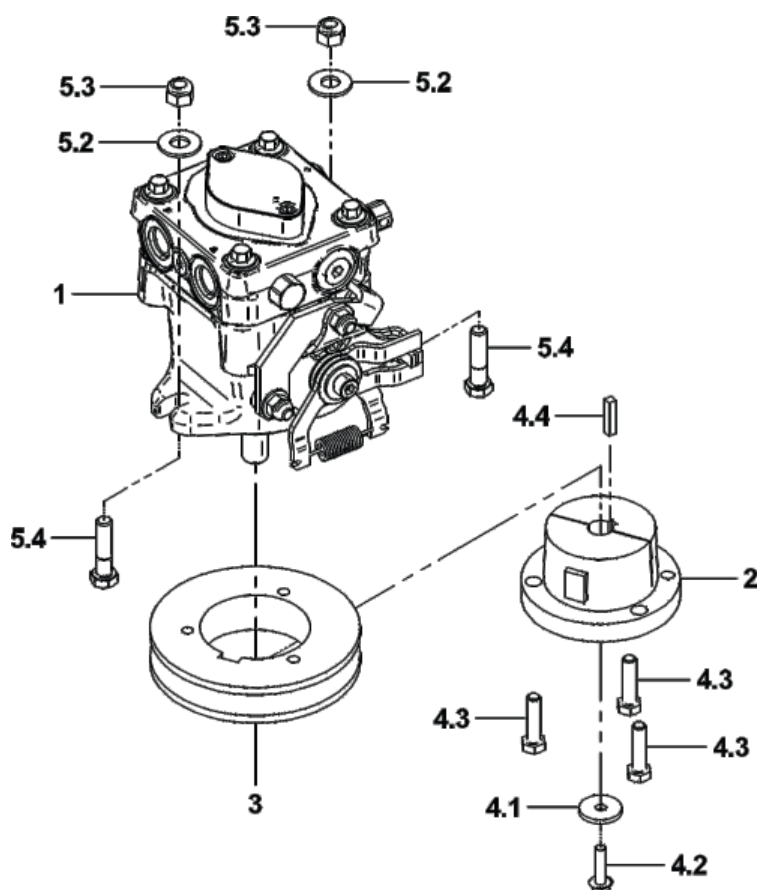


TBB-0657 C-Shaft Drive Kit Exploded View



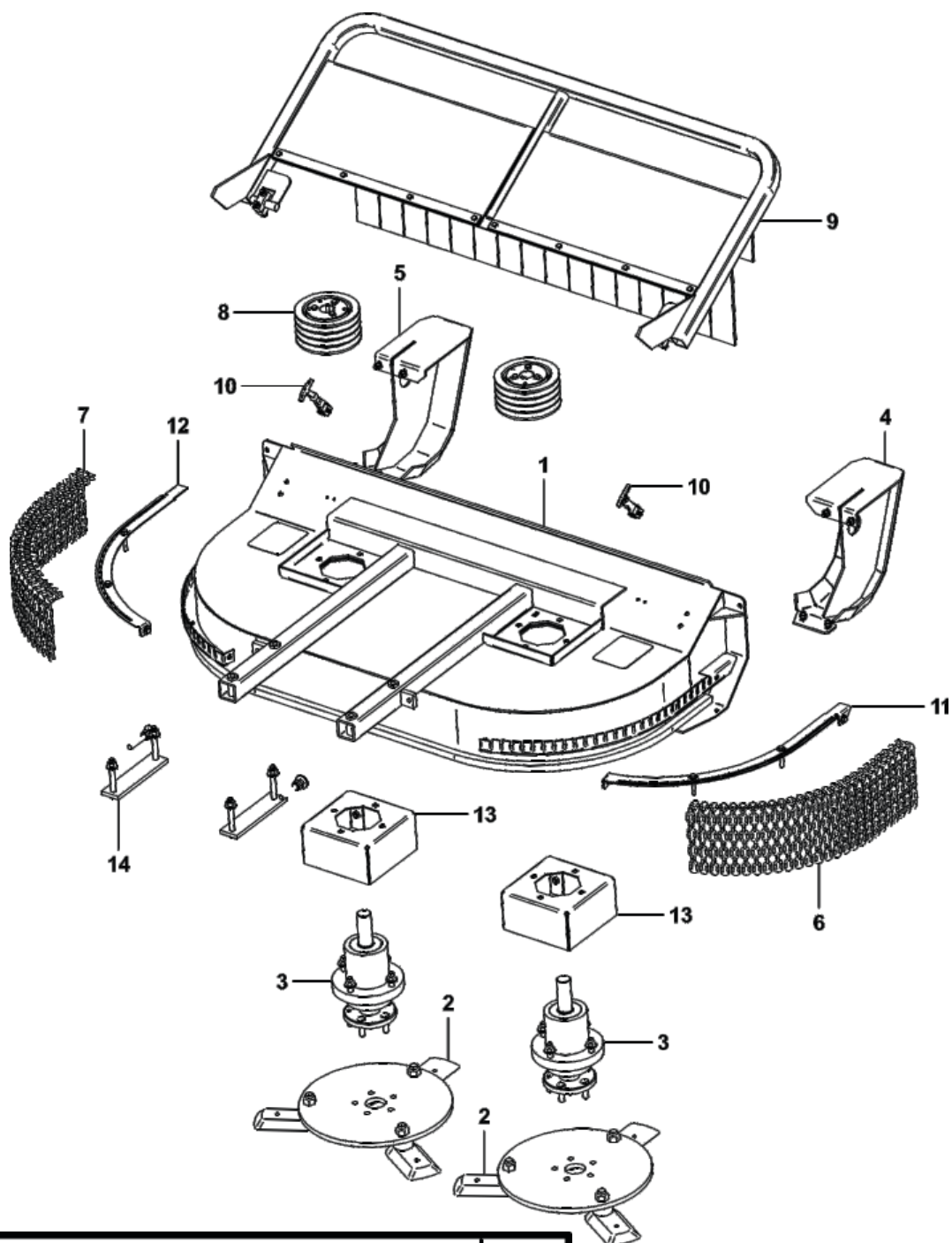
Item #	Part #	Desc.	Qty.
1	TBB-0661	Sheave / Blade Drive Kit	1
2	TBB-0247	COUNTER SHAFT	1
3	TBB-0656	C-Drive Sheave Kit	1
4	N0149	C. SHAFT PILLOW BEARING	1
5	TBB-0021	BEARING SPACER BLOCK	1
6	S0179	Large Counter Shaft Spacer	1
7	S0173	Small Counter Shaft Spacer	1
8	N0150	4-Bolt Flange Bearing	1
9	M0232	Deck Belt	1
10	HB0728	Mnt. HW / C-Shaft Assembly	1
10.1	K1235	1/2"-13 x 2-1/2" HHCS GR5	2
10.2	K0400	1/2" Flat Washer 1.084 OD x .528 ID x .120 T	2
10.3	K1247	1/2"-13 Nyloc Nut	2
10.4	K0328	7/16"-14 x 1-1/4" HHCS	4
10.5	K0329	Nylock Nut 7/16"-14 GR8	4

TBB-0665 Hydraulic Drive Kit Exploded View



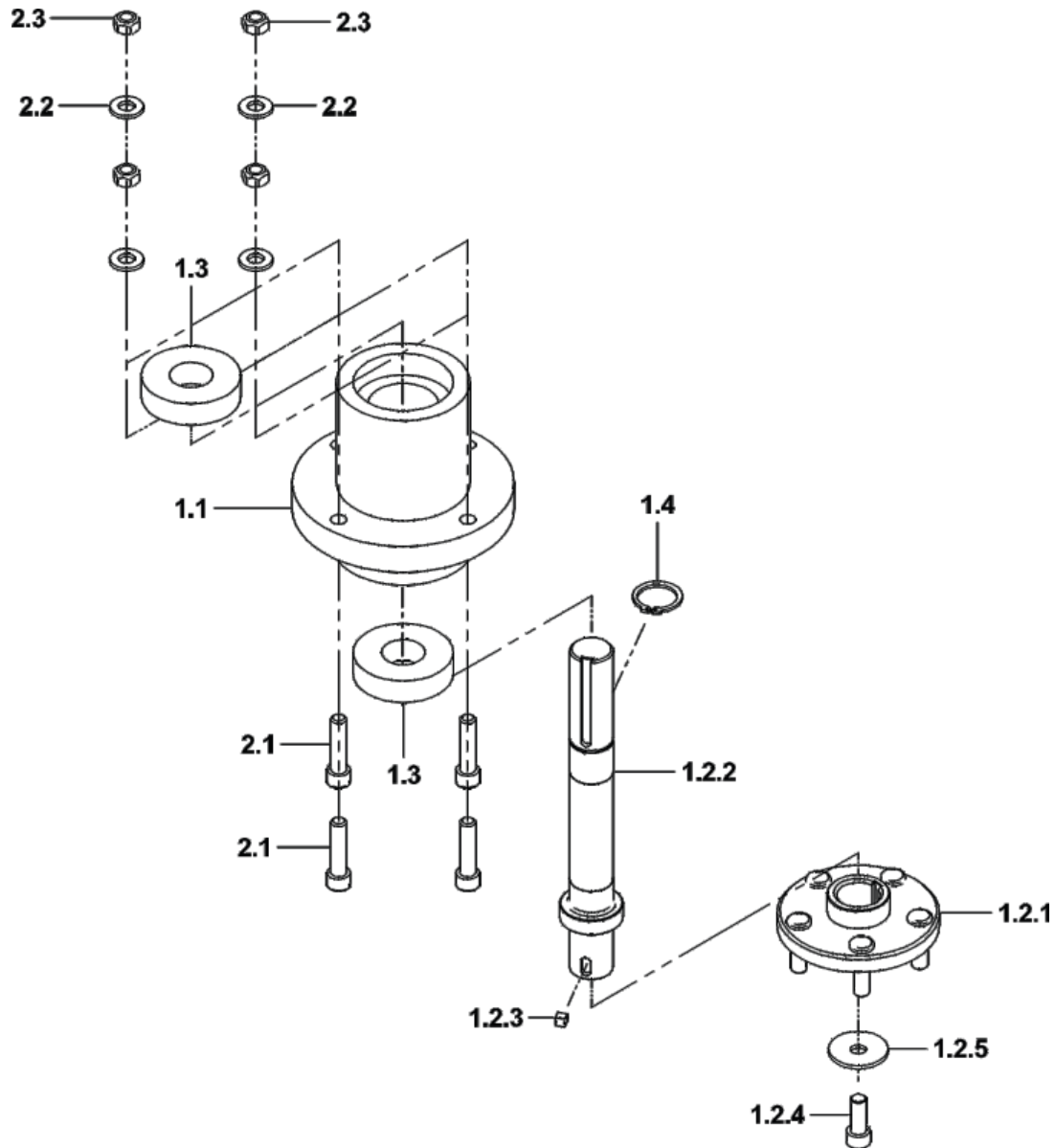
Item #	Part #	Desc.	Qty.
1	TBB-0318	PUMP ASSY.	1
2	TBB2-0080	BUSHING	1
3	TBB2-0079	PUMP PULLEY	1
4	HB0735	HW Bag / Pump Pulley Mnt. HW	1
4.1	K0369	Washer 1/4" ID x 1" OD	1
4.2	K0408	M6-1.0 x 25mm Class 10.9 Zinc Flange Bolt w/ Patch Coating	1
4.3	K0118	5/16"-18 x 1-1/4" G8 HHCS	3
4.4	K0339	Key / .196 X 1.312 / Hyd. Pump	1
5	HB0736	HW Bag / Hydraulic Pump Mnt. HW	1
5.2	K0047	Flat Washer 3/8" / 1.00 OD x .446 ID x .075 T	2
5.3	K1216	Nyloc Nut / 3/8"-16	2
5.4	K1193	HHCS 3/8"-16 X 1-1/2" GR5	2

TBB-0628 Complete Deck Assembly Exploded View



Item #	Part #	Desc.	Qty.
1	TBB-0410	Deck Assy.	1
2	TBB-0629	Blade Kit / Single Shaft	2
3	TBB-0620	Blade Shaft/Flange/Hub Kit	2
4	TBB-0609	Skid Kit / Right Side	1
5	TBB-0610	Skid Kit / Left Side	1
6	TBB-0604	Deck Chain Kit / Right Side	1
7	TBB-0605	Deck Chain Kit / Left Side	1
8	TBB-0606	Sheave Kit / Blade Shaft	2
9	TBB-0611	Tree Gate Kit	1
10	TBB-0614	Draw Latch Kit / Deck	1
11	TBB-0612	Chain Cover Kit / Right Side	1
12	TBB-0613	Chain Cover Kit / Left Side	1
13	TBB-0639	Vine Shield Kit / Single Shaft	2
14	HB0611	Mnt. HW / Deck To Chassis	1

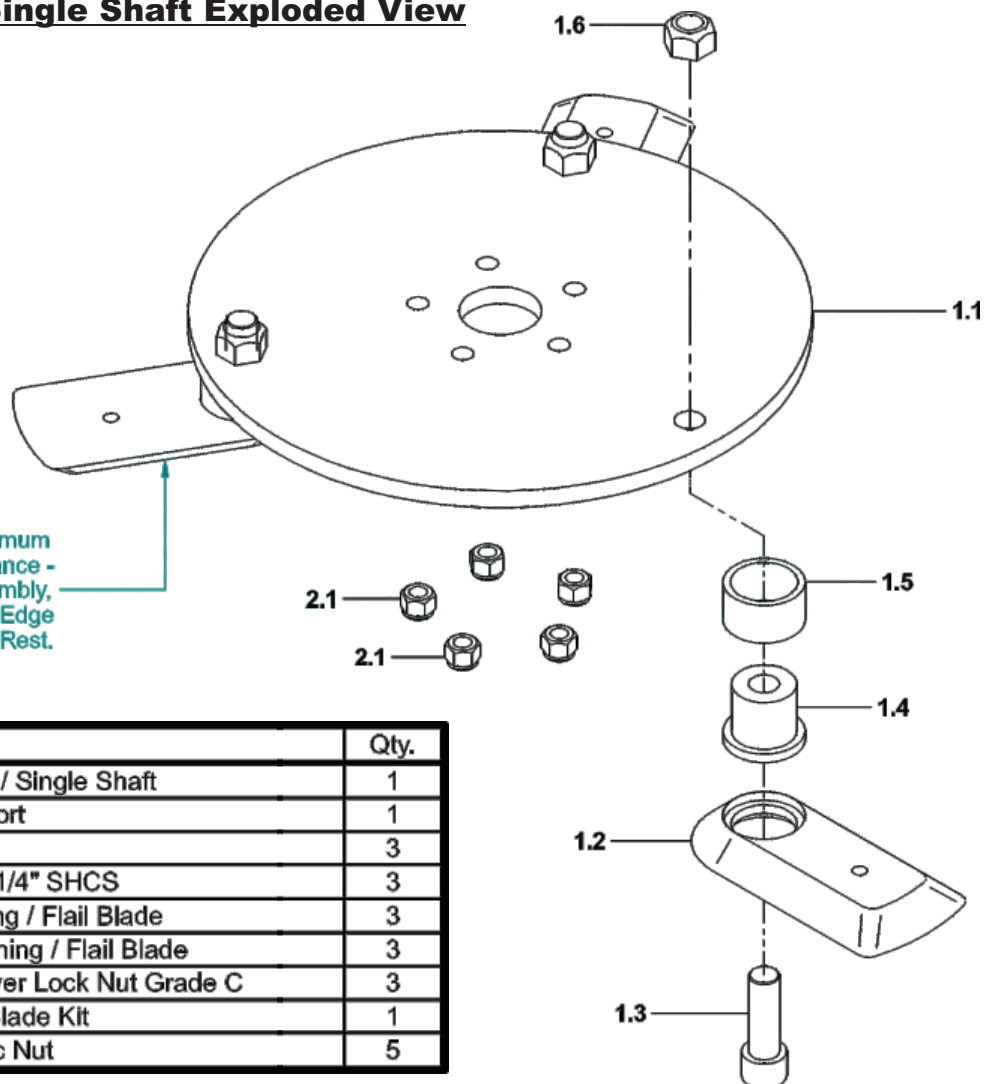
TBB-0620 Blade Shaft / Flange / Hub Kit Exploded View



Item #	Part #	Desc.	Qty.
1	TBB-0621	Blade Shaft/Flange/Hub Assy.	1
1.1	TBB-0023	Hub / Hub Assy.	1
1.2	TBB-0634	Blade Shaft/Flange Kit	1
1.2.1	TBB-0622	Flange Assy.	1
1.2.2	TBB-0623	Blade Shaft	1
1.2.3	J0294	5/16" Square x .312 Key	1
1.2.4	K0548	1/2"-20 x 1-1/4" SHCS w/ Nylon Patch	1
1.2.5	K0513	Belleville Washer 1.875 OD x .500 ID x .158 Thk	1
1.3	N0152	Bearing / Hub Assy.	2
1.4	J0261	1-3/8" Heavy Duty Snap Ring	1
2	HB0599	Mnt. HW / Blade Shaft/Flange/Hub Kit	1
2.1	K0071	1/2"-13 x 2" SHCS	4
2.2	K0400	1/2" Flat Washer 1.084 OD x .528 ID x .120 T	4
2.3	K0301	1/2"-13 Grade C Lock Nut	4

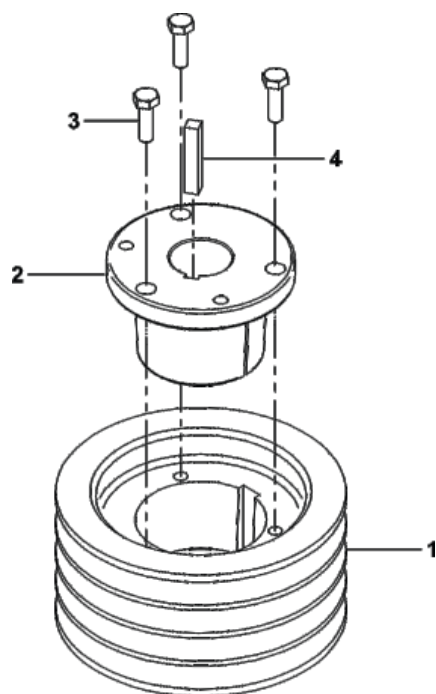
TBB-0629 Blade Kit / Single Shaft Exploded View

To Achieve Maximum
Cutting Performance -
During Assembly,
Flip (1) Blade Edge
Opposite The Rest.



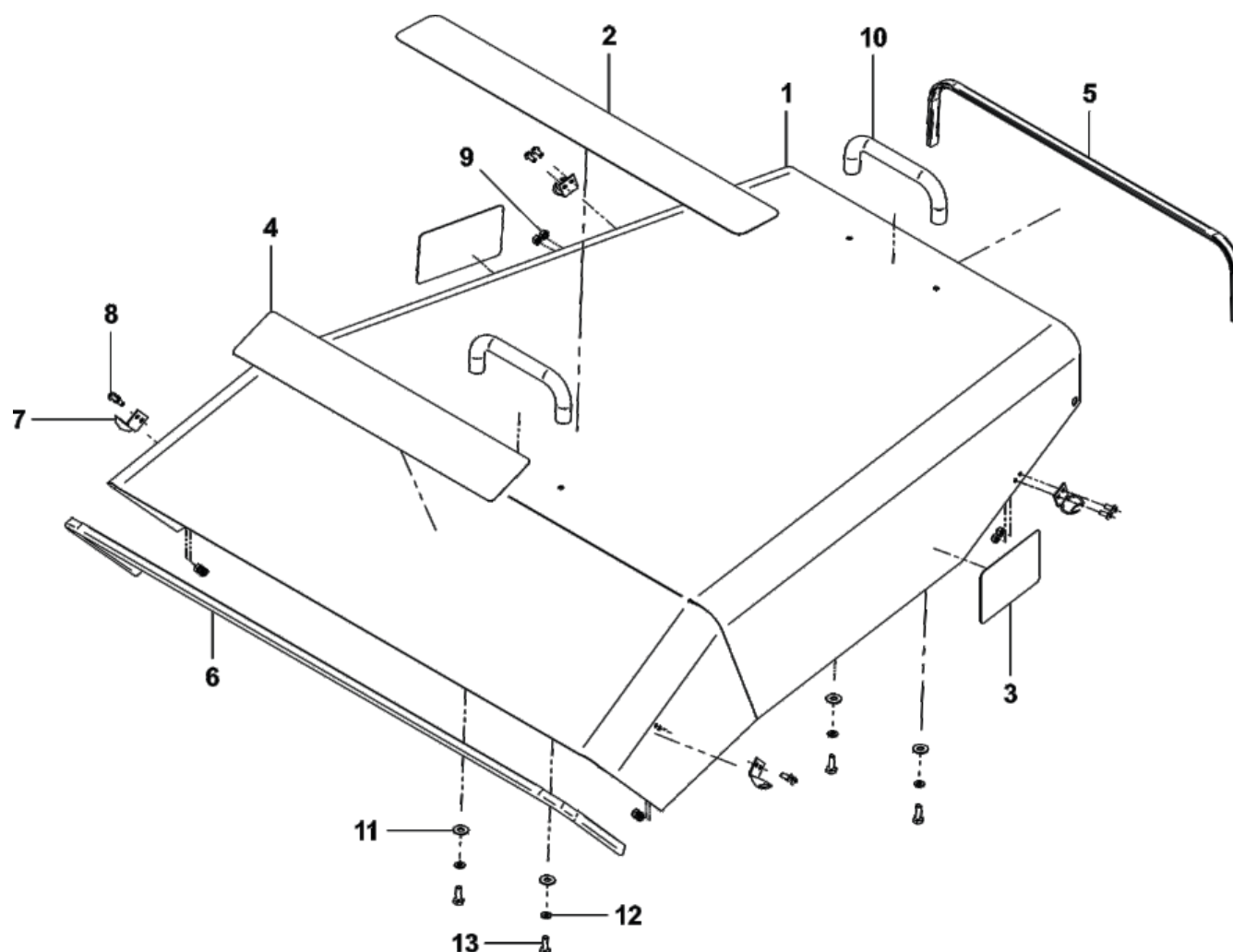
Item #	Part #	Desc.	Qty.
1	TBB-0630	Blade Assy. / Single Shaft	1
1.1	TBB-0631	Blade Support	1
1.2	TBB-0632	Flail Blade	3
1.3	K0298	3/4\"-10 x 2-1/4\" SHCS	3
1.4	TBB-0456	Pivot Bushing / Flail Blade	3
1.5	TBB-0457	Spacer Bushing / Flail Blade	3
1.6	K0302	3/4\"-10 Stover Lock Nut Grade C	3
2	HB0598	Mnt. HW / Blade Kit	1
2.1	K1018	1/2-20 Nyloc Nut	5

TBB-0606 Blade Shaft Sheave Kit Exploded View



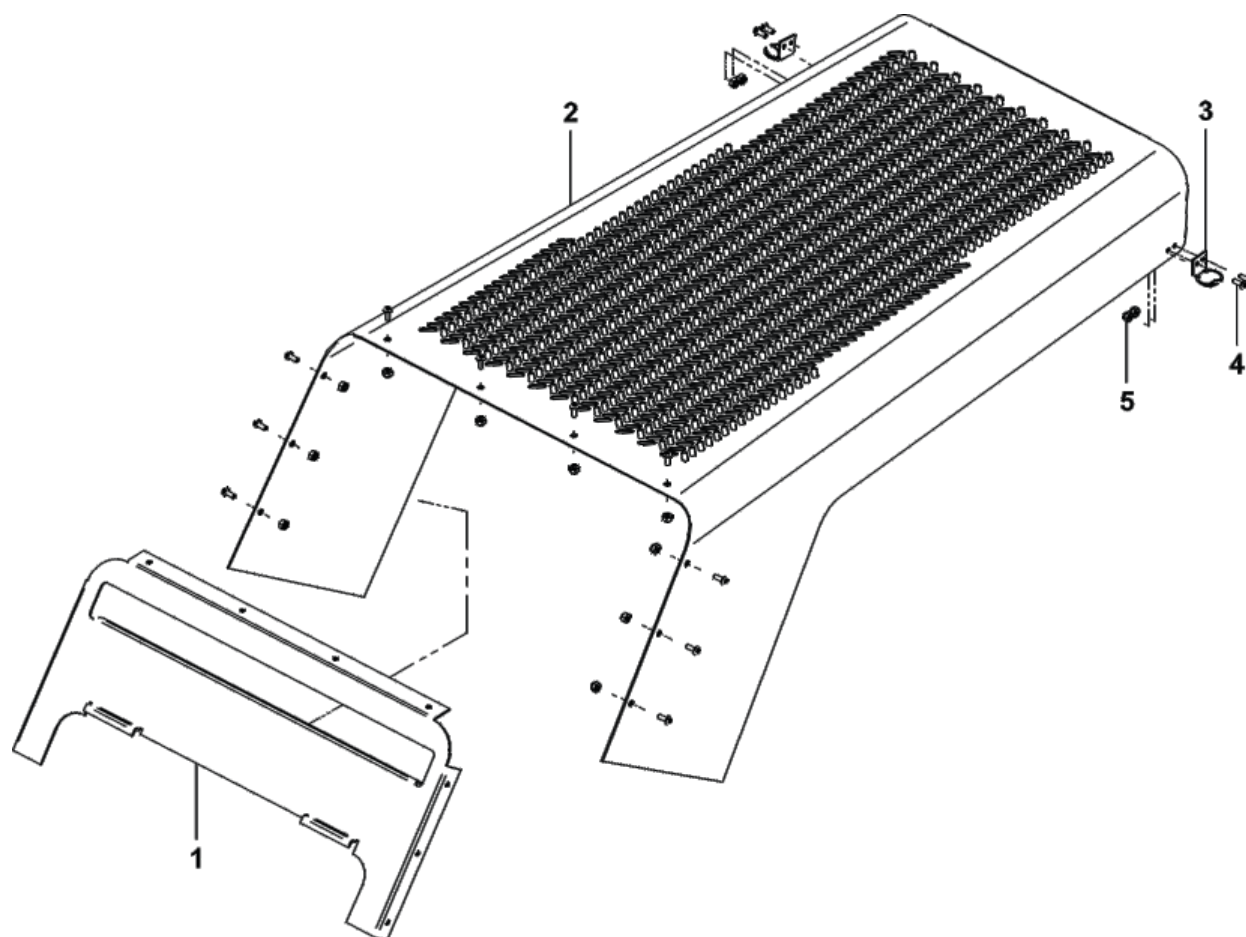
Item #	Part #	Desc.	Qty.
1	TBB-0161	Sheave / Blade Shaft	1
2	S0163	Taper Bushing / Blade Shaft	1
3	K1154	HHCS 5/16\"-18 x 1"	3
4	K0341	5/16\" x 1-3/4\" Keystick	1

TBB-0600 Deck Hood Assembly Exploded View



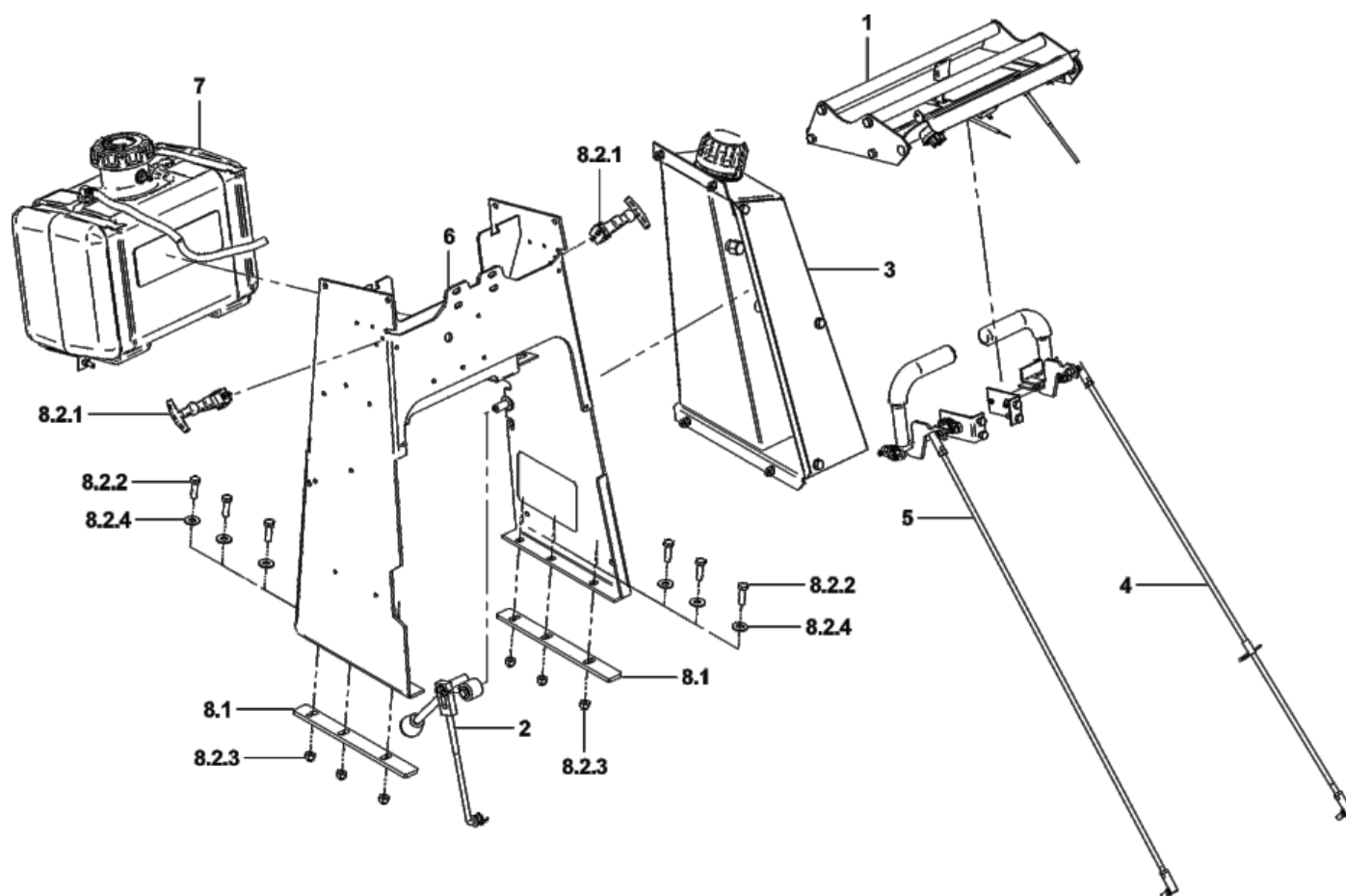
Item #	Part #	Desc.	Qty.
1	TBB-0335	Deck Hood	1
2	R2002	Decal / Brush Blazer Logo	1
3	R0009	Decal / Check Track Tension	2
4	R1047	Decal / Danger Rotating Blades	1
5	V0023	Top Guard / Deck Hood	1
6	V0026	Bottom Guard / Deck Hood	1
7	J0241	Draw Latch Clasp	4
8	K1064	10-24 x 1/2" Phillips PHMS	8
9	K1068	10-24 Nyloc Nut	8
10	J0016	Pull Handle / 1/4"-20	2
11	K0037	Flat Washer / 1/4" (.75 OD x .312 ID x .060 T)	4
12	K0039	1/4" Lock Washer	4
13	K1222	1/4"-20 X 3/4" HHCS	4

TBB-0601 Chassis Hood Assembly Exploded View



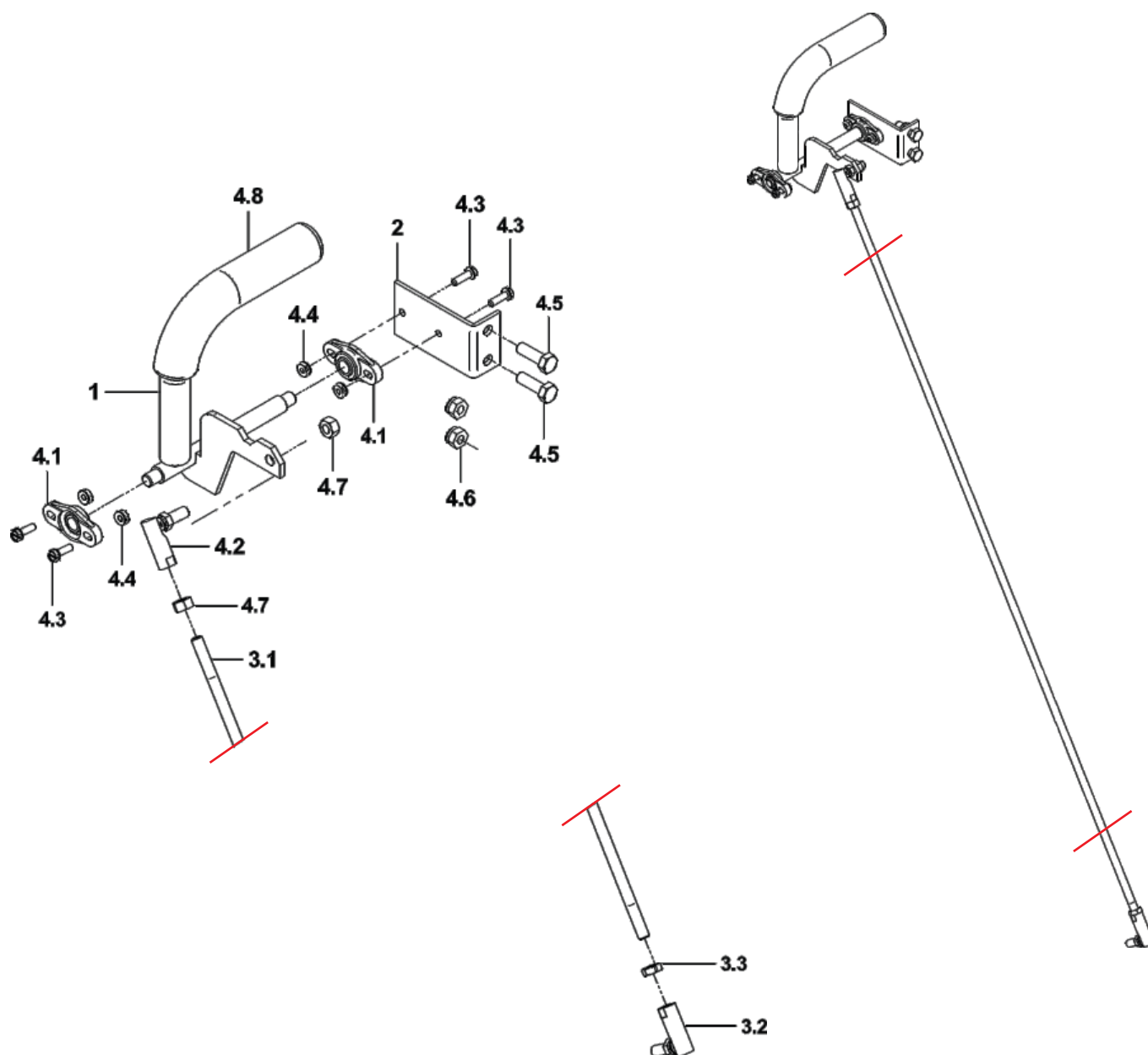
Item #	Part #	Desc.	Qty.
1	TBB2-0044	Mount Plate / Chassis Hood	1
2	TBB2-0045	Chassis Hood	1
3	J0241	Draw Latch Clasp	2
4	K1064	10-24 x 1/2" Phillips PHMS	14
5	K1068	10-24 Nyloc Nut	14

TBB-0601 Chassis Hood Assembly Exploded View



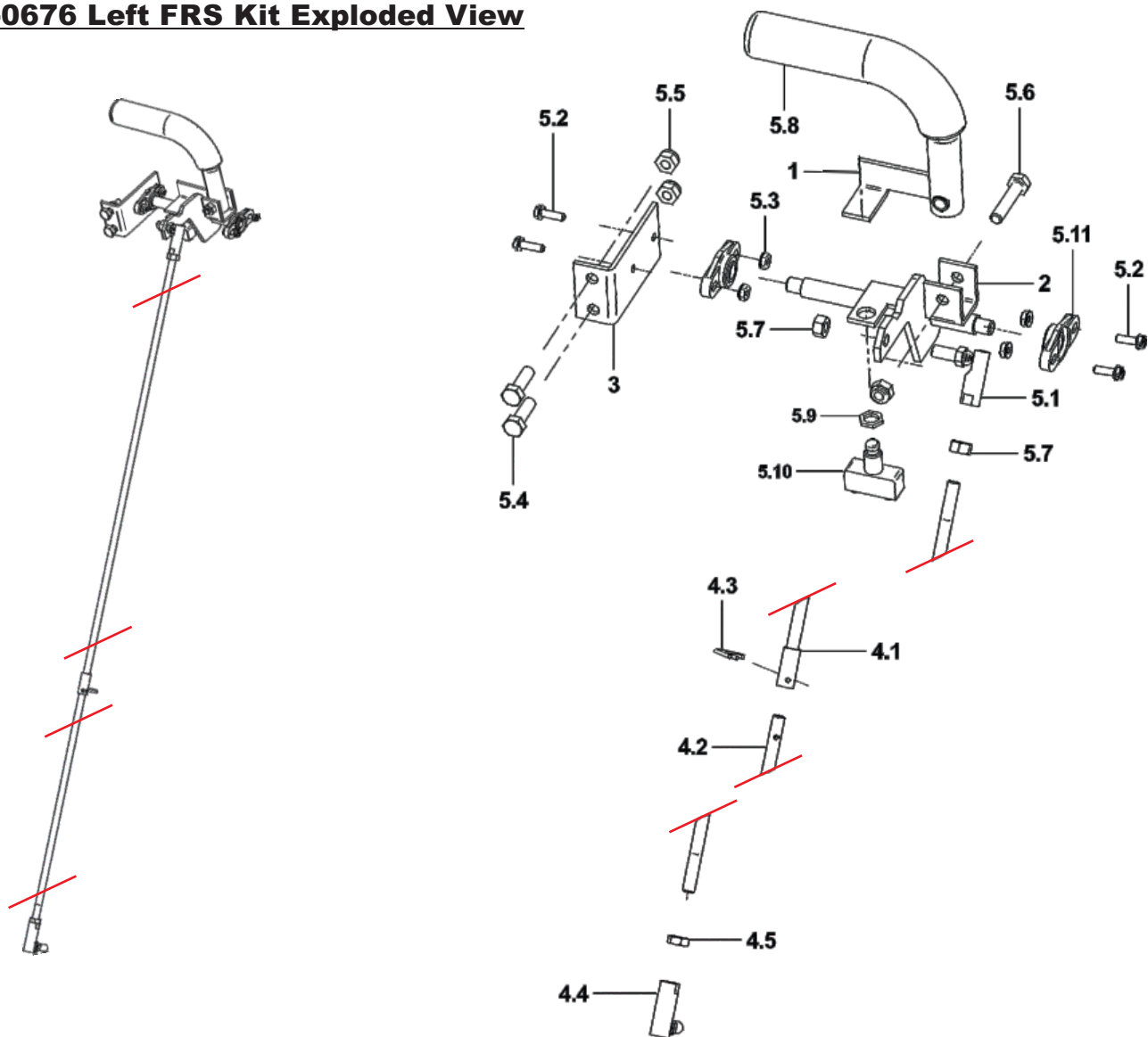
Item #	Part #	Desc.	Qty.
1	TBB-0680	Dash Kit / Briggs	1
2	TBB-0677	Blade Engagement Kit	1
3	TBB-0672	Hydro Tank Kit	1
4	TBB-0676	LT FRS Kit	1
5	TBB-0675	RT FRS Kit	1
6	TBB-0401	Tower Assy.	1
7	TBB-0673	Fuel Tank Kit	1
8	TBB-0683	Tower Kit	1
8.1	TBB-0503	Tower Spacer	2
8.2	HB0752	HW Bag / Tower HW Kit	1
8.2.1	TBB-0614	Draw Latch Kit / Deck	1
8.2.2	K1192	HHCS 3/8"-16 x 1-1/4" GR5	6
8.2.3	K1216	Nyloc Nut / 3/8"-16	6
8.2.4	K0047	Flat Washer 3/8" / 1.00 OD x .446 ID x .075 T	6

TBB-0675 Right FRS Kit Exploded View



Item #	Part #	Desc.	Qty.
1	TBB-0344	FRS HANDLE ASSY.	1
2	FRS-011	FRS MNT. BRKT.	1
3	TBB-0458	FRS Linkage Assy	1
3.1	TBB-0341	FRS Rod	1
3.2	K0390	Ball Joint 5/16"-24 LH Thd	1
3.3	K1443	5/16"-24 Jam Nut LH Thd	1
4	HB0749	HW Bag / RT FRS HW Kit	1
4.1	N0155	FLANGE MNT. BRG.	2
4.2	K1442	Ball Joint 5/16"-24 RH THD.	1
4.3	K0393	10-24 x 5/8" HWHSMS	4
4.4	K0394	10-24 HEX NUT WITH SERRATED WASHER	4
4.5	K1154	HHCS 5/16"-18 x 1"	2
4.6	K1180	5/16"-18 Nyloc Nut	2
4.7	K1444	5/16"-24 Hex Nut RH Thd	2
4.8	J0281	BLACK GRIP .840 ID x 6 L x .187 WALL	1

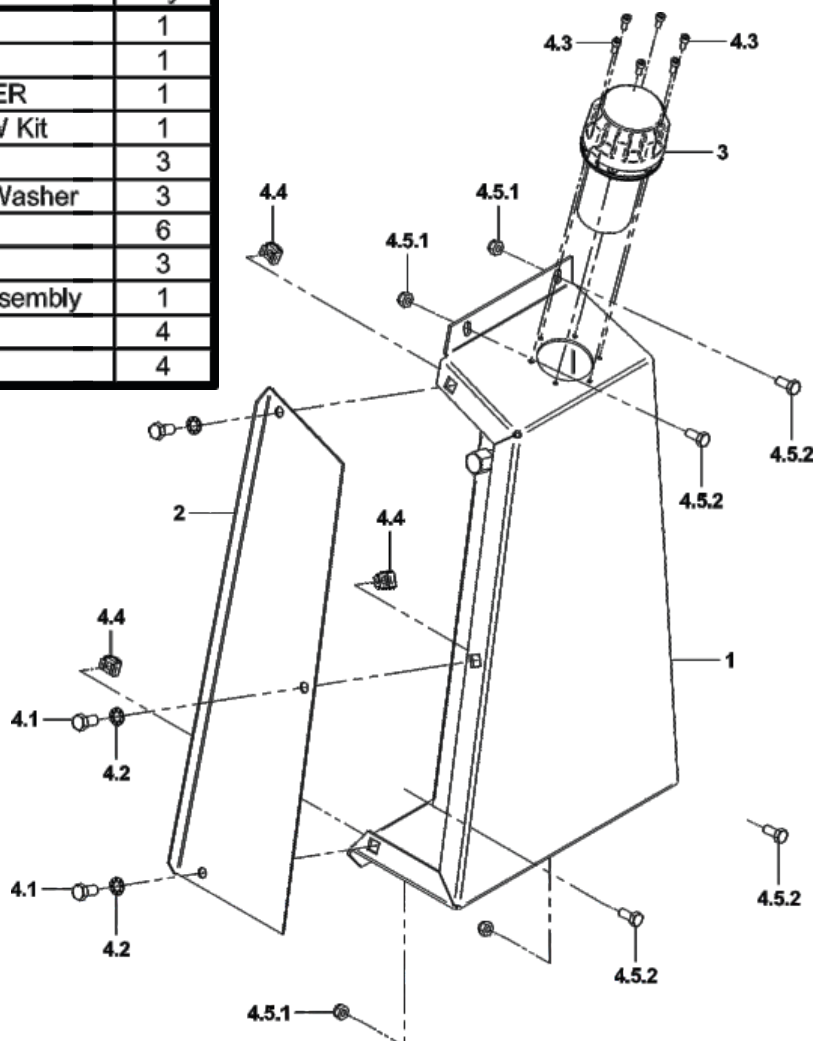
TBB-0676 Left FRS Kit Exploded View



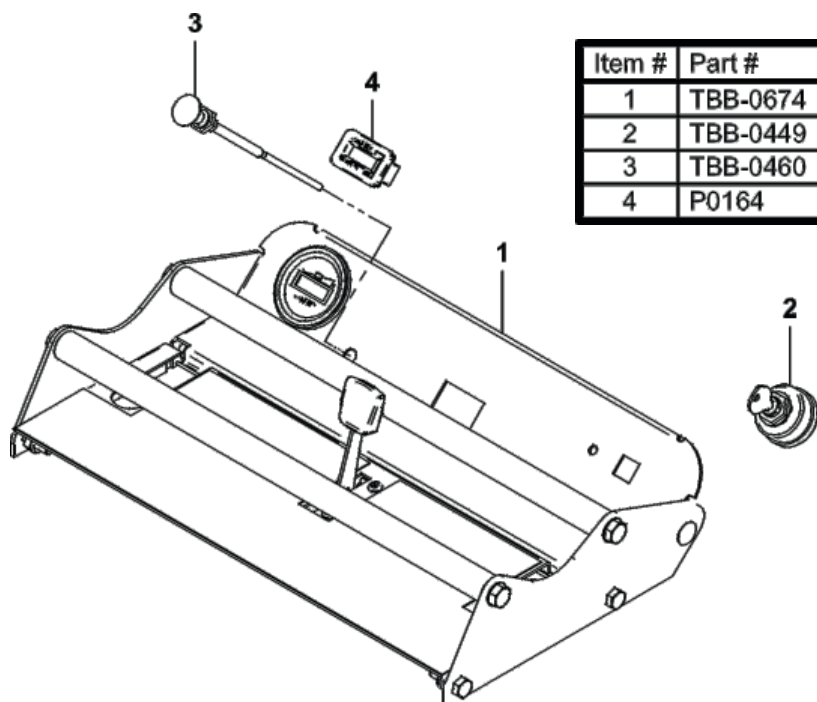
Item #	Part #	Desc.	Qty.
1	TBB-0414	FRS OPS HANDLE ASSY	1
2	TBB-0412	FRS OPS SHAFT ASSY.	1
3	FRS-011	FRS MNT. BRKT.	1
4	TBB-0495	FRS Linkage Assy / Detachable	1
4.1	TBB-0494	Upper FRS Rod Assy / Detachable	1
4.2	TBB-0492	Lower FRS Rod Assy / Detachable	1
4.3	K0099	Hair Pin Clip 3/32"	1
4.4	K0390	Ball Joint 5/16"-24 LH Thd	1
4.5	K1443	5/16"-24 Jam Nut LH Thd	1
5	HB0750	HW Bag / LT FRS Kit HW	1
5.1	K1442	Ball Joint 5/16"-24 RH THD.	1
5.2	K0393	10-24 x 5/8" HWHSMS	4
5.3	K0394	10-24 HEX NUT WITH SERRATED WASHER	4
5.4	K1154	HHCS 5/16"-18 x 1"	2
5.5	K1180	5/16"-18 Nyloc Nut	3
5.6	K1157	5/16"-18 x 1-1/2" All Thread HHCS	1
5.7	K1444	5/16"-24 Hex Nut RH Thd	2
5.8	J0281	BLACK GRIP .840 ID x 6 L x .187 WALL	1
5.9	J2005	15/32"-32 Hex Panel Nut	1
5.10	P0082	OPS SWITCH	1
5.11	N0155	FLANGE MNT. BRG.	2

TBB-0672 Hydro Tank Kit Exploded View

Item #	Part #	Desc.	Qty.
1	TBB-0311	HYDRO TANK ASSY.	1
2	TBB-0314	HYDRO TANK COVER	1
3	U0002	ZINGA FILLER BREATHER	1
4	HB0743	HW Bag / Hydro Tank HW Kit	1
4.1	K1190	HHCS / 3/8"-16 x 3/4"	3
4.2	K0049	3/8" Internal Tooth Lock Washer	3
4.3	K1377	SHCS 10-32 x 1/2 UNF	6
4.4	K0296	3/8" 16 CAGE NUT	3
4.5	HB0744	Mnt. HW / Hydro Tank Assembly	1
4.5.1	K1180	5/16"-18 Nyloc Nut	4
4.5.2	K1153	HHCS 5/16"-18 x 3/4"	4

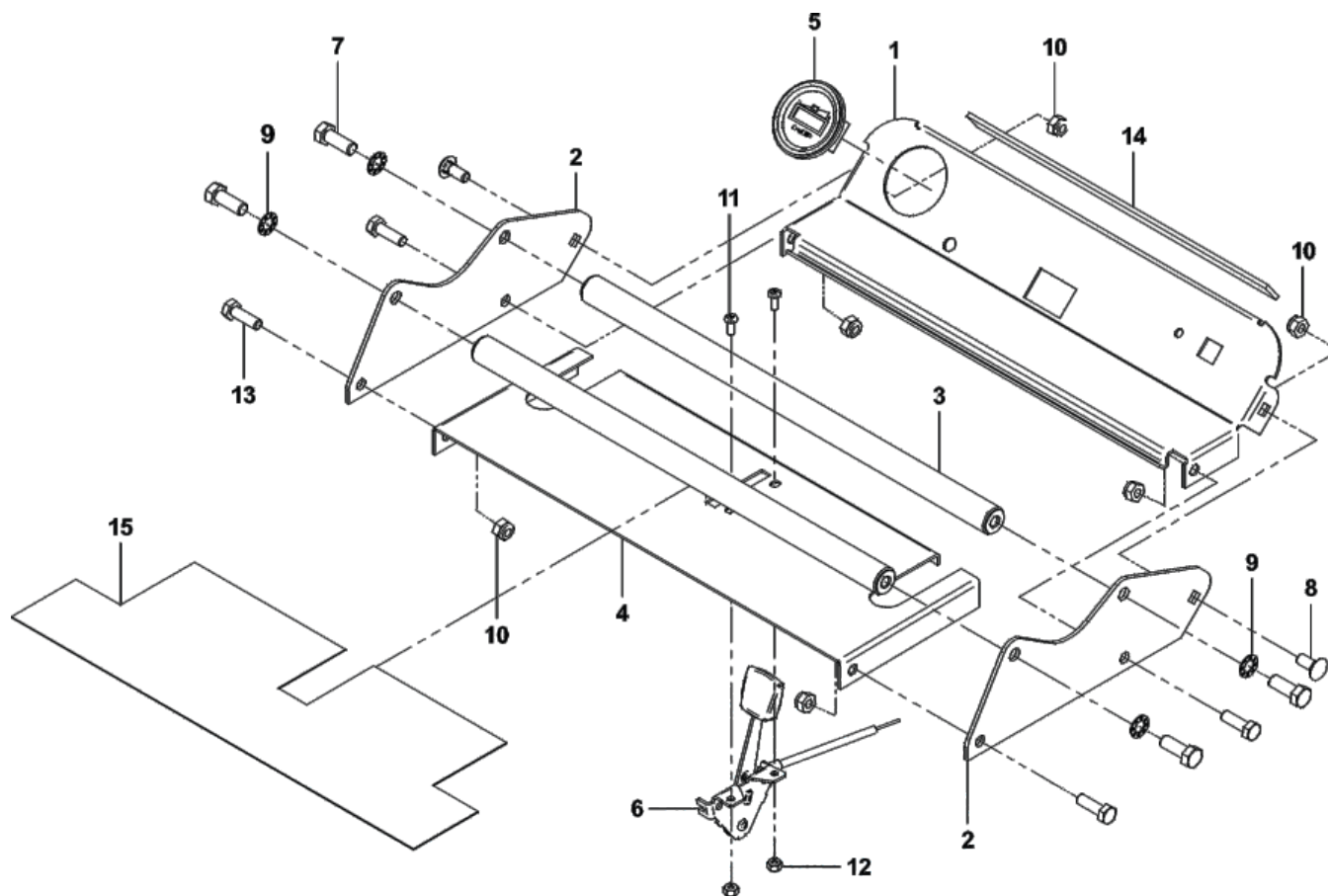


TBB-0680 Dash Kit / Briggs & Stratton Exploded View



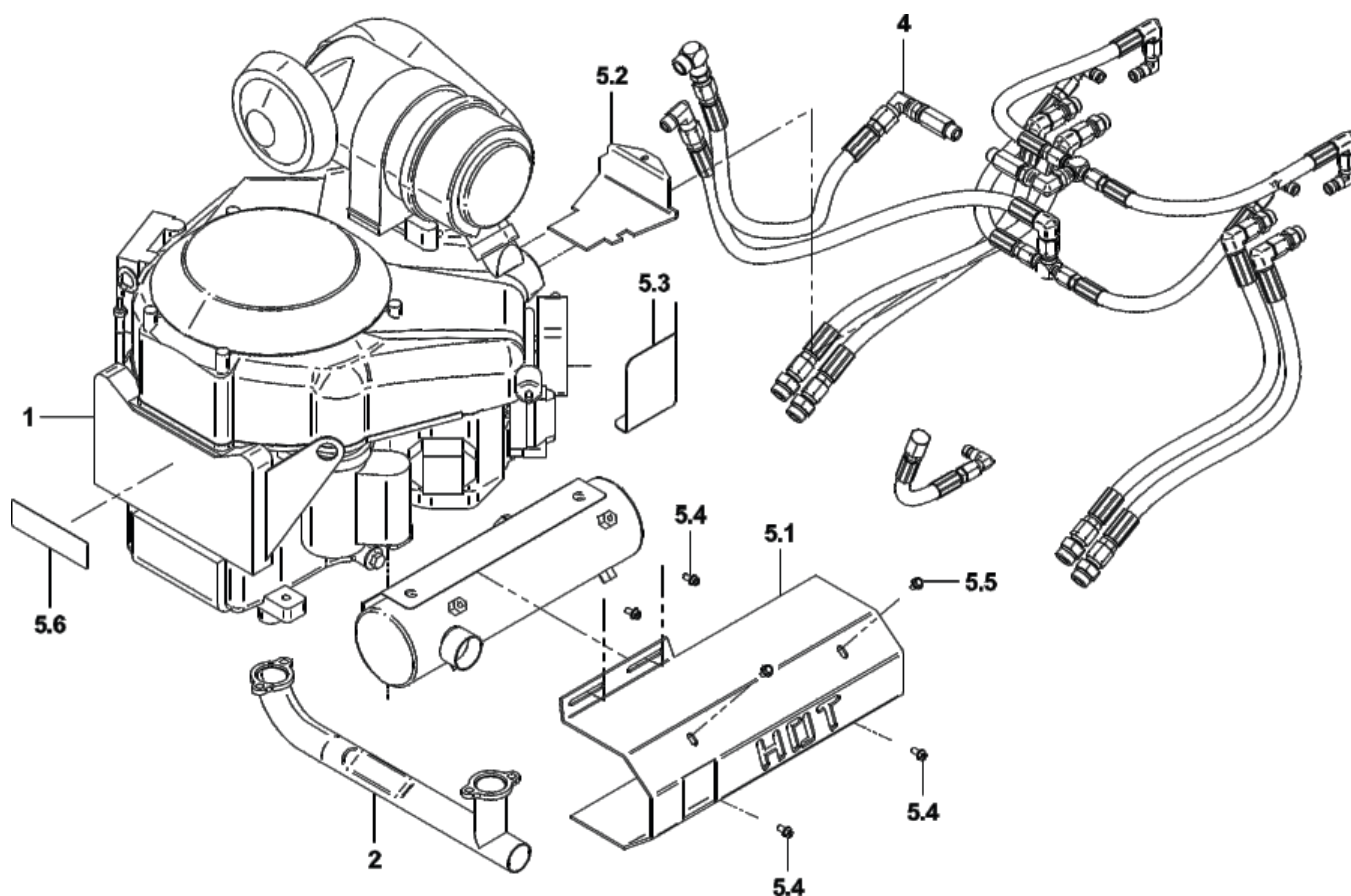
Item #	Part #	Desc.	Qty.
1	TBB-0674	Dash Assembly	1
2	TBB-0449	Ignition Switch	1
3	TBB-0460	Push/Pull Choke Cable Kit	1
4	P0164	Tach/Hour Meter	1

TBB-0674 Dash Assembly Exploded View



Item #	Part #	Desc.	Qty.
1	TBB2-0034	Gauge Dash Panel	1
2	TBB2-0035	DASH PANEL GUARD	2
3	TBB2-0048	FRS GRAB BAR ASSY.	2
4	TBB2-0049	CONTROL DASH PANEL	1
5	P0199	BATTERY METER	1
6	J0262	THROTTLE CABLE	1
7	K1191	HHCS 3/8"-16 x 1" GR5	4
8	K1142	5/16"-18 x 3/4" Carriage Bolt	2
9	K0049	3/8" Internal Tooth Lock Washer	4
10	K1180	5/16"-18 Nyloc Nut	6
11	K1064	10-24 x 1/2" Phillips PHMS	2
12	K1068	10-24 Nyloc Nut	2
13	K1154	HHCS 5/16"-18 x 1"	4
14	V0014	BELT HOOD SEAL	1
15	R2001	Decal / Control Dash Panel Label	1

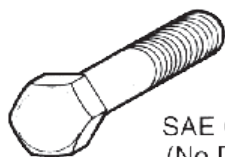
TBB-0687 Briggs & Stratton 36HP Vanguard Engine Kit Exploded View



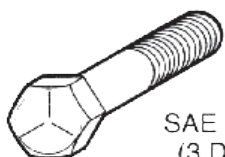
Item #	Part #	Desc.	Qty.
1	D1023	Briggs & Stratton 36HP Vanguard	1
2	TBB-0450	Exhaust Manifold	1
3	TBB-0487	Briggs Muffler	1
4	TBB-0496	Hydraulic Kit / Briggs & Stratton	1
5	TBB-0685	B&S Engine Guard Kit	1
5.1	TBB-0447	Vanguard Muffler Guard	1
5.2	TBB-0459	Carb Heat Shield	1
5.3	TBB-0497	Fuel Line Guard Bracket	1
5.4	K0353	HWHTCS 1/4"-20 x 1/2"	4
5.5	K0368	M6-1 x 12 G10.9 Serrated Flange Bolt	2
5.6	R0004	Label / CARB Certified Components LSIE	1

TORQUE SPECIFICATIONS

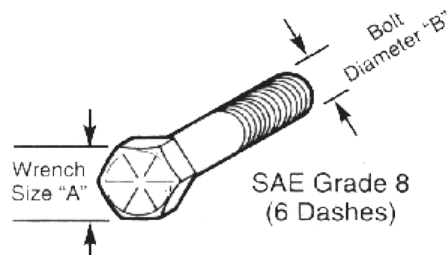
AMERICAN Bolt Head Markings



SAE Grade 2
(No Dashes)



SAE Grade 5
(3 Dashes)

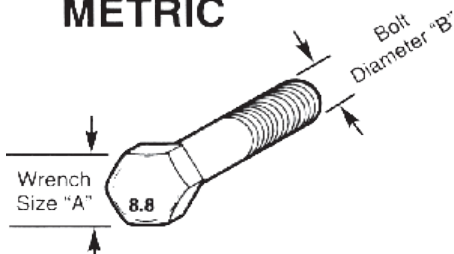


SAE Grade 8
(6 Dashes)

Recommended Torque in Foot Pounds (Newton Meters).*

WRENCH SIZE (IN.) "A"	BOLT DIAMETER (IN.) "B" AND THREAD SIZE	SAE GRADE 2	SAE GRADE 5	SAE GRADE 8
7/16	1/4 - 20 UNC	6 (7)	8 (11)	12 (16)
7/16	1/4 - 28 UNF	6 (8)	10 (13)	14 (18)
1/2	5/16 - 18 UNC	11 (15)	17 (23)	25 (33)
1/2	5/16 - 24 UNF	13 (17)	19 (26)	27 (37)
9/16	3/8 - 16 UNC	20 (27)	31 (42)	44 (60)
9/16	3/8 - 24 UNF	23 (31)	35 (47)	49 (66)
5/8	7/16 - 14 UNC	32 (43)	49 (66)	70 (95)
5/8	7/16 - 20 UNF	36 (49)	55 (75)	78 (106)
3/4	1/2 - 13 UNC	49 (66)	76 (103)	106 (144)
3/4	1/2 - 20 UNF	55 (75)	85 (115)	120 (163)
7/8	9/16 - 12 UNC	70 (95)	109 (148)	153 (207)
7/8	9/16 - 18 UNF	79 (107)	122 (165)	172 (233)
15/16	5/8 - 11 UNC	97 (131)	150 (203)	212 (287)
15/16	5/8 - 18 UNF	110 (149)	170 (230)	240 (325)
1-1/8	3/4 - 10 UNC	144 (195)	266 (360)	376 (509)
1-1/8	3/4 - 16 UNF	192 (260)	297 (402)	420 (569)
1-5/16	7/8 - 9 UNC	166 (225)	430 (583)	606 (821)
1-5/16	7/8 - 14 UNF	184 (249)	474 (642)	668 (905)
1-1/2	1 - 8 UNC	250 (339)	644 (873)	909 (1232)
1-1/2	1 - 12 UNF	274 (371)	705 (955)	995 (1348)
1-1/2	1 - 14 UNF	280 (379)	721 (977)	1019 (1381)
1-11/16	1-1/8 - 7 UNC	354 (480)	795 (1077)	1288 (1745)
1-11/16	1-1/8 - 12 UNF	397 (538)	890 (1206)	1444 (1957)
1-7/8	1-1/4 - 7 UNC	500 (678)	1120 (1518)	1817 (2462)
1-7/8	1-1/4 - 12 UNF	553 (749)	1241 (1682)	2013 (2728)
2-1/16	1-3/8 - 6 UNC	655 (887)	1470 (1992)	2382 (3228)
2-1/16	1-3/8 - 12 UNF	746 (1011)	1672 (2266)	2712 (3675)
2-1/4	1-1/2 - 6 UNC	870 (1179)	1950 (2642)	3161 (4283)
2-1/4	1-1/2 - 12 UNF	979 (1327)	2194 (2973)	3557 (4820)

METRIC



Numbers appearing on bolt heads
indicate ASTM class.

Recommended torque in foot pounds (newton Meters).*

WRENCH SIZE (mm) "A"	BOLT DIA. (mm) "B"	ASTM 4.6	ASTM 8.8	ASTM 9.8	ASTM 10.9
8	5	1.8 (2.4)		5.1 (6.9)	6.5 (8.8)
10	6	3 (4)		8.7 (12)	11.1 (15)
13	8	7.3 (10)		21.1 (29)	27 (37)
16	10	14.5 (20)		42 (57)	53 (72)
18	12	25 (34)	74 (100)	73 (99)	93 (126)
21	14	40 (54)	118 (160)	116 (157)	148 (201)
24	16	62 (84)	167 (226)	181 (245)	230 (312)
30	20	122 (165)	325 (440)		449 (608)
33	22		443 (600)		611 (828)
36	24	211 (286)	563 (763)		778 (1054)
41	27		821 (1112)		1138 (1542)
46	30	418 (566)	1119 (1516)		1547 (2096)

*Use 75% of the specified torque value for plated fasteners. Use 85% of the specified torque values for lubricated fasteners.

CALIFORNIA EMISSION CONTROL WARRANTY STATEMENT YOUR WARRANTY RIGHTS AND OBLIGATIONS

The California Air Resources Board and New PECO Inc. are pleased to explain the evaporative emissions control system warranty on our 2014 SORE and LSIE<1L Brush Blazer brush cutter. In California, new Brush blazers must be designed, built and equipped to meet the States' stringent anti-smog standards. New PECO Inc. must warrant the EECS on your Brush Blazer for the period of time listed below provided there has been no abuse, neglect or improper maintenance of your brush cutter

Your EECS may include parts such as the fuel-injection system, the ignition system, catalytic converter, fuel tanks, fuel lines, fuel caps, valves, canisters, filters, vapor hoses, clamps, connectors, and other associated emission-related components.

Where a warrantable condition exists, New PECO Inc. will repair your brush cutter at no cost you including diagnosis, parts, and labor.

MANUFACTURER'S WARRANTY COVERAGE:

This evaporative emission (or emissions) control system is warranted for two years. If any evaporative emission-related part on your equipment is defective, the part will be repaired or replaced by New PECO Inc.

OWNER'S WARRANTY REPSONSIBILITIES:

.As the Brush Blazer owner, you are responsible for performance of the required maintenance listed in your owner's manual. New PECO Inc recommends that you retain all receipts covering maintenance on your brush cutter, but New PECO Inc. cannot deny warranty solely for the lack of receipts.

As the Brush Blazer owner, you should however be aware that New PECO Inc may deny your warranty coverage if your brush cutter or part has failed due to abuse, neglect, or improper maintenance or unapproved modifications.

You are responsible for presenting your Brush Blazer to New PECO Inc.'s distribution center or service center as soon as the problem exists. The warranty repairs should be completed in a reasonable amount of time, not to exceed 30 days. If you have a question regarding your warranty coverage, you should contact New PECO Inc at 1-800-438-5823.

GENERAL EMISSIONS WARRANTY COVERAGE: **(Pertains to California only)**

New PECO Inc warrants to the ultimate purchaser and each subsequent purchaser that the Brush Blazer: Designed, built and equipped so as to conform with all applicable regulations; and free from defects in materials and workmanship that cause the failure of a warranted part to be identical in all material respects to that part as described in New PECO Inc.'s application for certification.

The warranty period begins on the date the Brush Blazer is delivered to an ultimate purchaser. The warranty period is for 2 years.

Subject to certain conditions and exclusions as stated below, the warranty on emission-related parts is as follows:

- (1) Any warranted part that is not scheduled for replacement as required maintenance in the written instructions supplied, is warranted for the warranty period stated above. If the part fails during the period of warranty coverage, the part will be repaired or replaced by New PECO Inc. according to subsection (4) below. Any such part repaired or replaced under warranty will be warranted for the remainder of the period.
- (2) Any warranted part that is scheduled only for regular inspection in the written instructions supplied is warranted for the warranty period stated above. Any such part repaired or replaced under warranty will be warranted for the warranty period.

GENERAL EMISSIONS WARRANTY COVERAGE (Cont'd):
(Pertains to California only)

- (1) Any warranted part that is scheduled for replacement as required maintenance in the written instructions supplied is warranted for the period of time before the first scheduled replacement date for that part. If the part fails before the first scheduled replacement, the part will be repaired or replaced by New PECO Inc. according to subsection (4) below. Any such part repaired or replaced under warranty will be warranted for the remainder of the period prior to the first scheduled replacement point for the part.
- (2) Repair or replacement of any warranted part under the warranty provisions herein must be performed at a warranty station at no charge to owner.
- (3) Notwithstanding the provisions herein, warranty services or repairs will be provided at all of New PECO Inc.'s distribution centers that are franchised to service the subject engines or equipment.
- (4) The Brush Blazer owner will not be charged for diagnostic labor that is directly associated with diagnosis of a defective, emission-related warranted part, provided that such diagnostic work is performed at a warranty station
- (5) New PECO Inc. is liable for damages to other engine or equipment components proximately caused by a failure under warranty of any warranted part.
- (6) Throughout the Brush Blazer warranty period stated above, New PECO Inc will maintain a supply warranted parts sufficient to meet the expected demand of such parts.
- (7) Any replacement part may be used in performance of any warranty maintenance or repairs and must be provided without charge to the owner. Such use will not reduce the warranty obligations of New PECO Inc.
- (8) Add-on or modified parts that are not exempted by the Air Resources Board may not be used. The use of any non-exempted add-on or modified parts by the ultimate purchaser will be grounds for disallowing a warranty claims. New PECO Inc. will not be liable to warrant failures of warranted parts caused by the use of a non-exempted add-on or modified part.

WARRANTED PARTS:

The repair or replacement of any warranted part otherwise eligible for warranty coverage may be excluded from such warranty coverage if New PECO Inc. demonstrates that the Brush Blazer has been abused, neglected, or improperly maintained, and that such abuse, neglect, or improper maintenance was the direct cause of the need for repair or replacement of the part. That notwithstanding, any adjustment of a component that has a factory installed, and properly operating, adjustment limiting device is still eligible for warranty coverage. The following emission warranty parts list are covered:

1. Fuel Tank
2. Fuel cap
3. Fuel lines
4. Fuel line fittings
5. Fuel line clamps
6. Control valves
7. Vapor hoses
8. Liquid/vapor separator
9. Carbon canister
10. Canister mounting brackets Carburetor purge port connector
(for Briggs & Stratton model only)



New PECO, Inc.
10 Walden Dr | Arden, North Carolina 28704
Phone: 1-800-438-5823 | 828-684-1234
Fax: 828-684-0858
Email: info@brushblazer.com
Website: www.brushblazer.com